

# **TASMANIAN STATISTICAL INDICATORS**

EMBARGO: 11:30AM (CANBERRA TIME) FRI 9 JAN 2004

## **C O N T E N T S**

	<i>page</i>
Notes .....	2
Main features .....	3
List of tables .....	8

### SUBJECT AREAS

<b>1</b> Population and demography .....	9
<b>2</b> Labour force .....	9
<b>3</b> Wages and prices .....	18
<b>4</b> Production .....	24
<b>5</b> Primary industry .....	25
<b>6</b> Building .....	28
<b>7</b> Finance .....	29
<b>8</b> Tourism .....	31
<b>9</b> Transport .....	34
<b>10</b> Retail trade .....	35
<b>11</b> Overseas trade .....	36
<b>12</b> Australia and state comparisons .....	39
<b>13</b> Tasmanian statistical divisions comparisons .....	41

### ADDITIONAL INFORMATION

Map: Tasmanian statistical divisions .....	42
--	----

## **I N Q U I R I E S**

- For further information about these and related statistics, contact the National Information and Referral Service on 1300 135 070 or Mary Eagle on Hobart (03) 6222 5812.

## NOTES

### FORTHCOMING ISSUES

ISSUE	RELEASE DATE
February 2004	12 February 2004
March 2004	11 March 2004
April 2004	8 April 2004
May 2004	11 May 2004
June 2004	10 June 2004
July 2004	9 July 2004

### INTRODUCTION

1 This publication contains latest figures for a comprehensive range of economic indicators. Statistics shown in this publication are the latest available at the date of preparation and may be subject to revision in subsequent issues. Reference should therefore always be made to the latest issue or to the statistical publication on the specific subject.

### SEASONAL ADJUSTMENT AND TREND ESTIMATION

2 Seasonal adjustment is a means of removing the estimated effects of normal seasonal variation from the series so that the effects of other influences on the series can be more clearly recognised. Seasonal adjustment does not aim to remove the irregular or non-seasonal influences which may be present in any particular month. This means that month-to-month movements of the seasonally adjusted estimates may not be reliable indicators of trend behaviour.

3 The smoothing of seasonally adjusted series reduces the impact of the irregular components of the seasonally adjusted series and creates trend estimates. These trend estimates are derived by applying a 13-term Henderson-weighted moving average to all months except the last six. The last six monthly trend estimates are obtained by applying surrogates of the Henderson average to the seasonally adjusted series.

4 While this smoothing technique enables estimates to be produced for the latest month, it does result in revisions to the most recent months as additional observations become available. Generally, subsequent revisions become smaller and after 3 months have a negligible impact on the series.

5 A number of ABS data series will reflect significant and subsequent impacts of The New Tax System (TNTS), introduced in Australia from 1 July 2000. Further information can be found in *Information Paper: ABS Statistics and The New Tax System* (cat. no. 1358.0).

### SYMBOLS AND OTHER USAGES

na	not available
np	not available for separate publication (but included in totals where applicable)
nya	not yet available
. .	not applicable
—	nil or rounded to zero
p	preliminary figure or series subject to revision
r	figure or series revised since previous issue
*	estimate has a relative standard error of between 25% and 50% and should be used with caution
**	estimate has a relative standard error greater than 50% and is considered too unreliable for general use.

Stevan R. Matheson  
Regional Director, Tasmania

## MAIN FEATURES

### THE LABOUR FORCE

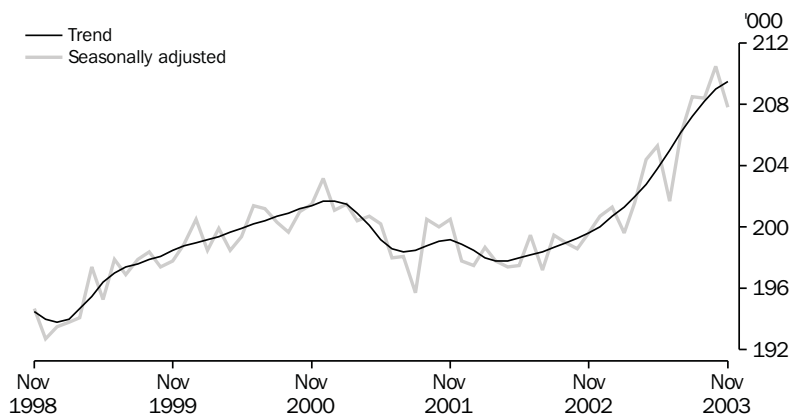
Trend estimates There were an estimated 224,700 persons (based on *trend* estimates) in the labour force in November 2003 and an estimated 381,300 civilian Tasmanians aged 15 years or more, yielding a labour force participation rate of 59.0%, compared to 58.3% in November 2002. The Australian labour force participation rate for November 2003 was 63.6%, compared to the November 2002 estimate of 63.9% — see table 36 and *Labour Force, Australia* (cat. no. 6202.0).

For Tasmanian males, the *trend* estimate of the participation rate was 66.7% in November 2003, compared to the November 2002 estimate of 66.8%. For Tasmanian females, the *trend* estimate of the participation rate was 51.7% in November 2003, compared to 50.2% in November 2002 — see table 3.

### EMPLOYMENT

Trend estimates The *trend* estimate of the total number of employed persons in Tasmania in November 2003 was 209,500, compared to 199,600 in November 2002, an increase of 5.0%. Employment over the same period increased in New South Wales by 1.6%, Victoria by 1.1%, Queensland by 3.7%, South Australia by 1.7% and Western Australia by 0.9%. The increase in the national employment figure over the same period was 1.8% — see table 36 and *Labour Force, Australia* (cat. no. 6202.0).

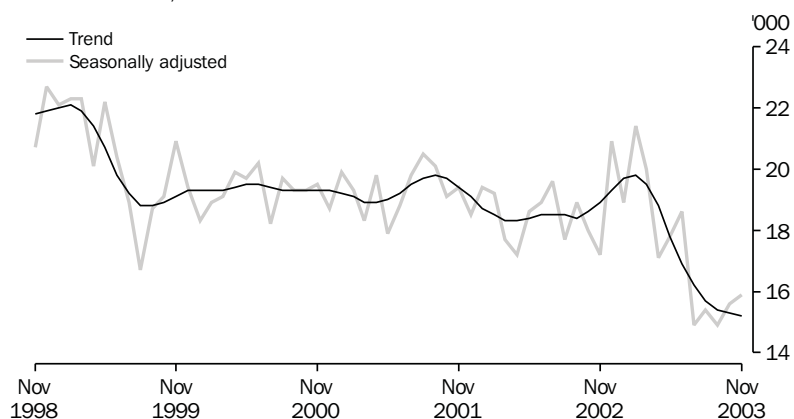
EMPLOYMENT, TASMANIA



### UNEMPLOYMENT

Trend estimates The *trend* estimate of the number of unemployed persons in Tasmania for November 2003 was 15,200 compared to 18,900 in November 2002. The *trend* estimate of the unemployment rate for November 2003 was 6.7%, a decrease from the November 2002 figure of 8.7%. The Australian *trend* estimate of the unemployment rate was 5.6% in November 2003 compared to 6.1% in November 2002 — see tables 3 and 36, and *Labour Force, Australia* (cat. no. 6202.0).

### UNEMPLOYMENT, TASMANIA

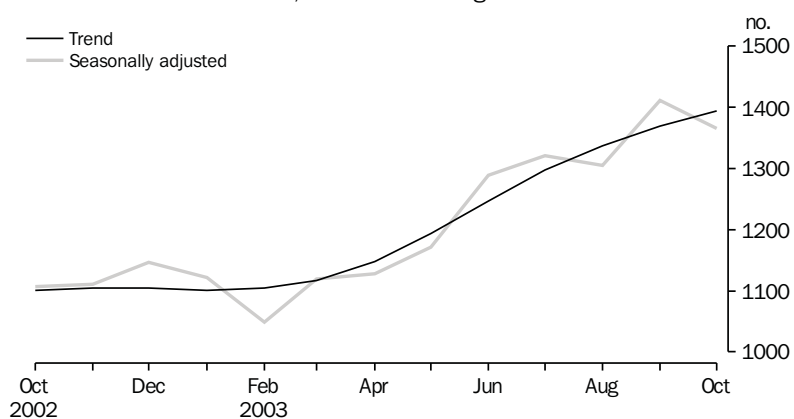


### HOUSING FINANCE

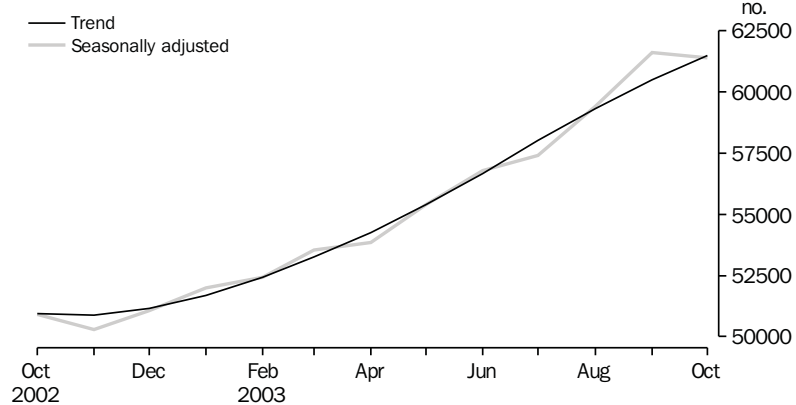
Trend estimates In *trend* terms, the number of housing finance commitments in Tasmania for October 2003 was 1,394, an increase of 1.8% from the previous month. In the same period, the *trend* estimate for Australia increased by 1.6%.

The Tasmanian *trend* estimate increased by 26.6% between October 2002 and October 2003, while the national *trend* estimate increased by 20.7%. The changes in the number of housing finance commitments over the same period for the other states and territories were New South Wales (18.3%), Victoria (11.5%), Queensland (32.0%), South Australia (22.6%), Western Australia (23.5%), Northern Territory (44.5%) and Australian Capital Territory (3.7%) — see table 26 and *Housing Finance for Owner Occupation, Australia* (cat. no. 5609.0)..

### HOUSING FINANCE TASMANIA, Number of dwellings



HOUSING FINANCE AUSTRALIA, Number of dwellings



## BUILDING APPROVALS

**Original terms** There were 238 dwelling units approved in Tasmania during October 2003, including 218 new houses. This compares to 237 dwelling units approved during September 2003, including 224 new houses. The number of dwelling units approved in October 2003 increased by 38.4% from the 172 approvals recorded in October 2002.

At current prices, the value of total building approved in Tasmania was \$57.5m in October 2003, which was 25.5% above the September 2003 figure of \$45.8m and 59.3% above the October 2002 figure of \$36.1m. Residential building contributed \$39.4m and non-residential building \$18.1m in October 2003 — see table 25 and *Building Approvals, Australia* (cat. no. 8731.0).

## RETAIL

**Trend estimates** In *trend* terms, the estimate of retail turnover in Australia for October 2003 was \$15,515.8m, a 7.6% increase from the October 2002 estimate of \$14,413.8m. In *trend* terms, the estimate of retail turnover in Tasmania for October 2003 was \$332.6m, a 12.7% increase from the October 2002 estimate of \$295.1m — see table 32 and *Retail Trade, Australia* (cat. no. 8501.0).

## LIVESTOCK SLAUGHTERING

**Trend estimates** In October 2003, monthly movements of *trend* estimates showed only slight change in the three livestock slaughtering series, with cattle and calves up by 1.1%, sheep and lambs down by 1.6% and pigs little changed from September 2003.

The *trend* estimate for the number of cattle and calves slaughtered in October 2003 was 21,500, up by 7.6% on the estimate for October 2002 and up by 24.5% on the estimate for October 2001.

The *trend* estimate for the number of sheep and lambs slaughtered in October 2003 was 67,200, up by 13.3% on the estimate for October 2002, but little changed from the estimate for October 2001.

Trend estimates *continued* The *trend* estimate for the number of pigs slaughtered in October 2003 was 3,900, down by 8.5% on the estimate for October 2002 and down by 20.1% on the estimate for October 2001 — See table 21

#### OVERSEAS TRADE

The value of Tasmania's exports for the month of October 2003 was \$184m, an increase of 9% on the month of September 2003. Australia's exports for October 2003 totalled \$9,109m.

Tasmania's major export destinations for the month of October 2003 were Japan (\$46.1m), Hong Kong (\$23.7m) and Korea (\$18.1m). Major commodity groups exported for the month were non-ferrous metals (\$57.7m), metallic ores and metal scrap (\$13.2m) and fish, crustaceans and molluscs (\$12.5m).

#### CONSUMER PRICE INDEX

The Consumer Price Index (All groups) for Hobart increased by 0.2% in the September quarter of 2003. Brisbane recorded the largest increase (1.1%) while Darwin recorded a decrease (-0.1%). The weighted average of the eight capital cities increased by 0.6%.



## LIST OF TABLES

<b>1</b>	Population	9
<b>2</b>	Births, deaths and marriages	9
<b>3</b>	Labour force status	10
<b>4</b>	Labour force status by region, males	11
<b>5</b>	Labour force status by region, females	12
<b>6</b>	Labour force status by region, persons	13
<b>7</b>	Teenage labour market	14
<b>8</b>	All employed persons by occupation	15
<b>9</b>	Employed persons by industry	16
<b>10</b>	Average hours worked	16
<b>11</b>	Job vacancies	17
<b>12</b>	Industrial disputes	17
<b>13</b>	Average weekly earnings of employees	18
<b>14</b>	Indexes of total hourly rates of pay	19
<b>15</b>	Summary of annual movements in wages and prices	20
<b>16</b>	House price index numbers, Hobart	20
<b>17</b>	Consumer price index, Hobart and eight capital cities combined	21
<b>18</b>	Price index of materials used in building other than house building, Hobart	22
<b>19</b>	Production of selected commodities	24
<b>20</b>	Livestock slaughtering: original	25
<b>21</b>	Livestock slaughtering: seasonally adjusted and trend	25
<b>22</b>	Meat production	26
<b>23</b>	Principal mineral concentrates produced	26
<b>24</b>	Sawmills and plywood mills, logs delivered and timber produced	27
<b>25</b>	Building approvals: original	28
<b>26</b>	Secured housing commitments	29
<b>27</b>	Private new capital expenditure by type of asset: original	30
<b>28</b>	Accommodation establishments	31
<b>29</b>	National Parks, person entries	32
<b>30</b>	Tracks in National Parks, walker registrations	33
<b>31</b>	Sales of new motor vehicles	34
<b>32</b>	Turnover of retail establishments at current prices	35
<b>33</b>	Value of overseas trade — Tasmania and Australia	36
<b>34</b>	Merchandise exports by selected countries and country groups	37
<b>35</b>	Merchandise exports by selected commodity groups: original	38
<b>36</b>	Major Statistical Indicators — Australia and state comparisons	39
<b>37</b>	Major Statistical Indicators — Tasmanian Statistical Divisions	41



# 1

## POPULATION — ORIGINAL

	<i>Estimated resident population</i>	<i>Natural increase(a)</i>	<i>Net estimated migration gain</i>	<i>Total population growth</i>	<i>Annual growth rate(b)</i>
	'000	'000	'000	'000	%
<b>2000-01</b>	471.8	2.0	-2.0	0.4	0.08
<b>2001-02</b>	472.6	2.0	-1.2	0.8	0.17
<b>2002-03</b>	477.1	1.9	2.6	4.5	0.95
<b>2001</b>					
June qtr	471.8	0.4	-0.5	—	0.08
September qtr	471.8	0.4	-0.4	—	0.10
December qtr	472.2	0.5	-0.1	0.4	0.16
<b>2002</b>					
March qtr	472.6	0.6	-0.2	0.4	0.16
June qtr p	472.6	0.5	-0.5	—	0.17
September qtr p	473.2	0.6	—	0.6	0.31
December qtr p	474.3	0.3	0.8	1.1	0.45
<b>2003</b>					
March qtr p	475.9	0.6	1.1	1.6	0.71
June qtr p	477.1	0.5	0.7	1.1	0.95

(a) Excess of live births registered over deaths registered (based on usual state of residence).

(b) Percentage growth from same quarter in previous year.

Source: *Australian Demographic Statistics (cat. no. 3101.0)*.

# 2

## BIRTHS AND DEATHS(a)(b)

	<i>Births</i>		<i>Deaths</i>		<i>Infant mortality(c)</i>	
	<i>no.</i>	<i>rate(d)</i>	<i>no.</i>	<i>rate(e)</i>	<i>no.</i>	<i>rate(f)</i>
<b>2000-01</b>	5 874	1.88	3 827	7.6	43	7.3
<b>2001-02</b>	5 871	1.91	3 849	7.4	30	5.1
<b>2002-03</b>	5 809	1.91	3 877	7.3	28	4.8
<b>2001</b>						
June qtr	1 402	..	983	..	10	7.1
September qtr	1 416	..	1 021	..	6	4.2
December qtr	1 507	..	964	..	4	2.7
<b>2002</b>						
March qtr	1 477	..	890	..	13	8.8
June qtr	1 471	..	974	..	7	4.8
September qtr	1 539	..	981	..	9	5.8
December qtr	1 440	..	1 108	..	7	4.9
<b>2003</b>						
March qtr	1 490	..	934	..	8	5.4
June qtr	1 340	..	854	..	4	3.0

(a) Usual residents of Tasmania.

(b) Marriages data is no longer released on a quarterly basis.

(c) Deaths of children under one year of age.

(d) Total fertility rate. The sum of age specific fertility rates (live births at each age of a mother per female population of that age). It represents the number of children a woman would bear during her lifetime if she experienced age-specific fertility rates at each age of her reproductive life.

(e) Standardised death rate. The overall death rate, per 1,000 persons, that would have prevailed in a standard population if it had experienced at each age the death rates of the population being studied. The standard population used in these calculations is all persons in the 1991 Australian population.

(f) Rate per 1,000 live births.

Source: *Australian Demographic Statistics (cat. no. 3101.0)*.

## 3

## LABOUR FORCE STATUS(a) — SEASONALLY ADJUSTED AND TREND

	Seasonally adjusted series(b)				Trend series(b)			
	Employed	Unemployed	Unemployment rate	Participation rate	Employed	Unemployed	Unemployment rate	Participation rate
	'000	'000	%	%	'000	'000	%	%
MALES								
<b>2002</b>								
November	111.6	10.0	8.3	66.9	110.3	11.3	9.3	66.8
December	110.2	12.7	10.3	67.5	110.3	11.7	9.6	67.0
<b>2003</b>								
January	110.5	11.7	9.6	67.1	110.3	12.1	9.9	67.1
February	109.1	13.2	10.8	67.0	110.3	12.2	10.0	67.2
March	110.2	12.6	10.3	67.2	110.5	12.0	9.8	67.1
April	111.8	10.6	8.6	66.9	110.9	11.4	9.3	66.9
May	111.8	10.2	8.4	66.6	111.4	10.7	8.8	66.7
June	110.4	11.5	9.4	66.5	111.9	10.1	8.2	66.5
July	113.3	8.0	6.6	66.1	112.4	9.7	7.9	66.5
August	113.0	9.7	7.9	66.7	112.8	9.5	7.8	66.5
September	112.7	9.3	7.6	66.3	113.1	9.5	7.8	66.5
October	113.8	10.0	8.0	67.0	113.3	9.6	7.8	66.6
November	113.2	10.1	8.2	66.7	113.6	9.7	7.9	66.7
FEMALES								
<b>2002</b>								
November	88.0	7.2	7.5	49.3	89.3	7.6	7.9	50.2
December	90.5	8.3	8.4	51.1	89.7	7.6	7.8	50.4
<b>2003</b>								
January	90.8	7.1	7.3	50.7	90.4	7.6	7.8	50.7
February	90.6	8.1	8.3	51.0	91.0	7.6	7.7	50.9
March	91.5	7.4	7.5	51.0	91.5	7.5	7.6	51.1
April	92.6	6.6	6.6	51.1	92.0	7.3	7.4	51.2
May	93.5	7.6	7.5	52.0	92.5	7.1	7.1	51.2
June	91.3	7.1	7.2	50.5	93.0	6.8	6.8	51.3
July	92.8	6.8	6.9	51.1	93.8	6.5	6.5	51.4
August	95.5	5.7	5.7	51.9	94.5	6.2	6.1	51.6
September	95.7	5.6	5.5	51.8	95.1	5.9	5.8	51.7
October	96.7	5.6	5.5	52.2	95.6	5.7	5.6	51.7
November	94.6	5.8	5.8	51.2	96.0	5.5	5.4	51.7
PERSONS								
<b>2002</b>								
November	199.6	17.2	7.9	57.8	199.6	18.9	8.7	58.3
December	200.7	20.9	9.4	59.1	200.0	19.3	8.8	58.5
<b>2003</b>								
January	201.3	18.9	8.6	58.6	200.7	19.7	8.9	58.7
February	199.6	21.4	9.7	58.8	201.3	19.8	8.9	58.8
March	201.6	20.0	9.0	58.9	202.0	19.5	8.8	58.8
April	204.4	17.1	7.7	58.8	202.8	18.8	8.5	58.8
May	205.3	17.8	8.0	59.1	203.8	17.8	8.0	58.7
June	201.7	18.6	8.4	58.3	205.0	16.9	7.6	58.7
July	206.1	14.9	6.7	58.4	206.2	16.2	7.3	58.7
August	208.5	15.4	6.9	59.1	207.2	15.7	7.0	58.8
September	208.4	14.9	6.7	58.8	208.2	15.4	6.9	58.9
October	210.5	15.6	6.9	59.4	209.0	15.3	6.8	58.9
November	207.8	15.9	7.1	58.7	209.5	15.2	6.7	59.0

(a) For explanation of terms and concepts, refer to *Labour Force, Australia* (cat. no. 6202.0).

(b) Seasonal factors are reviewed annually to take account of each additional year's data. The results of the review are used to compile revised seasonally adjusted and trend estimates each February. Trend estimates for the most recent months are also revised each month; see Notes on page 2.

Source: *Labour Force, Australia* (cat. no. 6202.0).

## 4

## LABOUR FORCE STATUS BY REGION — MALES(a)(b)

	Total employed	Total unemployed	Unemployment rate	Participation rate
	'000	'000	%	%
HOBART AND SOUTHERN STATISTICAL DIVISIONS				
<b>2001</b>				
October	51.0	6.0	10.6	65.9
<b>2002</b>				
October	50.5	5.1	9.2	64.1
<b>2003</b>				
August	51.7	4.5	8.0	64.4
September	51.9	4.3	7.6	64.5
October	52.0	4.6	8.1	64.3
NORTHERN STATISTICAL DIVISION				
<b>2001</b>				
October	33.5	3.2	8.7	68.5
<b>2002</b>				
October	33.1	2.4	6.9	65.8
<b>2003</b>				
August	33.4	3.2	8.7	69.0
September	34.5	3.6	9.5	69.7
October	34.4	3.4	9.0	70.2
MERSEY-LYELL STATISTICAL DIVISION				
<b>2001</b>				
October	24.7	2.9	10.4	67.1
<b>2002</b>				
October	24.6	2.6	9.5	66.2
<b>2003</b>				
August	26.5	2.7	9.3	66.6
September	26.2	2.0	7.1	66.4
October	26.3	1.6	5.8	65.2
TASMANIA				
<b>2001</b>				
October	109.2	12.1	9.9	66.9
<b>2002</b>				
October	108.3	10.1	8.6	65.1
<b>2003</b>				
August	111.6	10.4	8.5	66.3
September	112.6	9.9	8.1	66.5
October	112.7	9.6	7.9	66.2

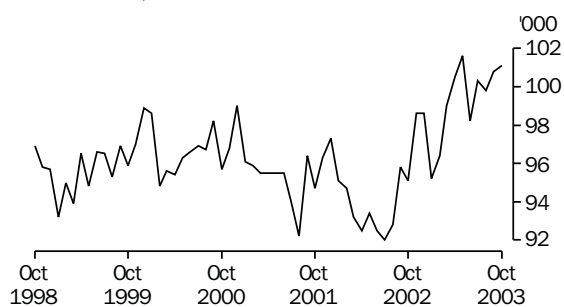
(a) For explanation of terms and concepts, refer to *Labour Force, Australia* (cat. no. 6202.0).

(b) Data in this table are original series, i.e. they are not part of a seasonally adjusted or a trend series. Accordingly, care should be exercised when using these data.

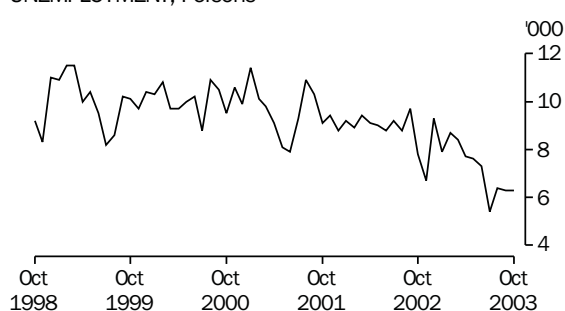
Source: *Labour Force, Selected Summary Tables, Australia* (cat. no. 6291.0.55.001).

## Hobart and Southern Statistical Divisions (see table 6)

EMPLOYMENT, Persons



UNEMPLOYMENT, Persons



## 5

## LABOUR FORCE STATUS BY REGION — FEMALES(a)(b)

	<i>Total employed</i>	<i>Total unemployed</i>	<i>Unemployment rate</i>	<i>Participation rate</i>
	'000	'000	%	%
HOBART AND SOUTHERN STATISTICAL DIVISIONS				
<b>2001</b>				
October	43.8	3.1	6.6	50.2
<b>2002</b>				
October	44.6	2.7	5.7	50.5
<b>2003</b>				
August	48.1	1.9	3.8	53.2
September	48.9	2.0	4.0	54.0
October	49.1	1.8	3.5	53.8
NORTHERN STATISTICAL DIVISIONS				
<b>2001</b>				
October	27.2	1.6	5.6	51.6
<b>2002</b>				
October	25.6	2.2	8.0	50.4
<b>2003</b>				
August	26.5	2.4	8.2	51.9
September	27.6	2.6	8.5	53.1
October	28.4	2.2	7.1	54.2
MERSEY-LYELL STATISTICAL DIVISIONS				
<b>2001</b>				
October	18.9	1.9	9.3	49.0
<b>2002</b>				
October	19.1	2.5	11.7	49.2
<b>2003</b>				
August	19.2	1.9	8.9	46.3
September	18.8	1.5	7.6	45.7
October	19.3	1.6	7.7	46.4
TASMANIA				
<b>2001</b>				
October	89.9	6.7	6.9	50.4
<b>2002</b>				
October	89.3	7.4	7.7	50.2
<b>2003</b>				
August	93.8	6.2	6.2	51.2
September	95.3	6.1	6.0	51.9
October	96.8	5.5	5.4	52.2

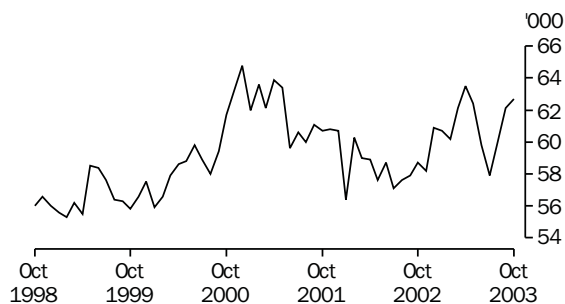
(a) For explanation of terms and concepts, refer to *Labour Force, Australia* (cat. no. 6202.0).

(b) Data in this table are original series, i.e. they are not part of a seasonally adjusted or a trend series. Accordingly, care should be exercised when using these data.

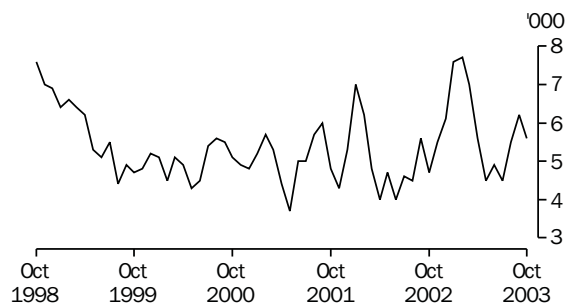
Source: *Labour Force, Selected Summary Tables, Australia* (cat. no. 6291.0.55.001).

## Northern Statistical Division (see table 6)

EMPLOYMENT, Persons



UNEMPLOYMENT, Persons



## 6

## LABOUR FORCE STATUS BY REGION — PERSONS(a)(b)

	Total employed	Total unemployed	Unemployment rate	Participation rate
	'000	'000	%	%
HOBART AND SOUTHERN STATISTICAL DIVISIONS				
<b>2001</b>				
October	94.7	9.1	8.8	57.7
<b>2002</b>				
October	95.1	7.8	7.6	57.1
<b>2003</b>				
August	99.8	6.4	6.0	58.6
September	100.8	6.3	5.9	59.1
October	101.1	6.3	5.9	58.9
NORTHERN STATISTICAL DIVISION				
<b>2001</b>				
October	60.7	4.8	7.3	59.9
<b>2002</b>				
October	58.7	4.7	7.4	58.0
<b>2003</b>				
August	59.9	5.5	8.5	60.3
September	62.1	6.2	9.1	61.3
October	62.7	5.6	8.2	62.0
MERSEY-LYELL STATISTICAL DIVISION				
<b>2001</b>				
October	43.6	4.8	9.9	57.9
<b>2002</b>				
October	43.8	5.1	10.5	57.4
<b>2003</b>				
August	45.7	4.6	9.1	56.3
September	45.0	3.6	7.3	55.8
October	45.6	3.2	6.6	55.6
TASMANIA				
<b>2001</b>				
October	199.1	18.7	8.6	58.4
<b>2002</b>				
October	197.6	17.6	8.2	57.4
<b>2003</b>				
August	205.4	16.5	7.5	58.5
September	207.9	16.0	7.2	59.0
October	209.4	15.1	6.7	59.0

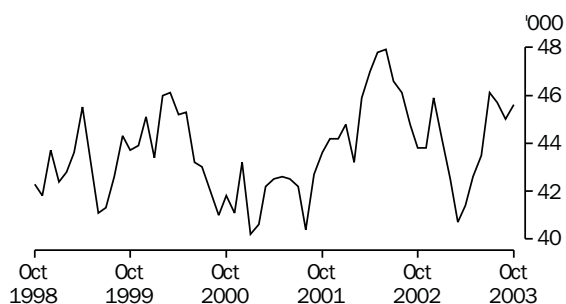
(a) For explanation of terms and concepts, refer to *Labour Force, Australia* (cat. no. 6202.0).

(b) Data in this table are original series, i.e. they are not part of a seasonally adjusted or a trend series. Accordingly, care should be exercised when using these data.

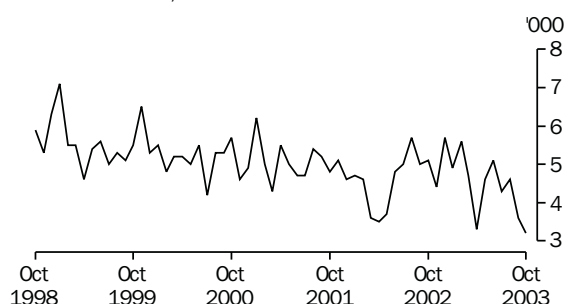
Source: *Labour Force, Selected Summary Tables, Australia* (cat. no. 6291.0.55.001).

## Mersey-Lyell Statistical Division (see table 6)

EMPLOYMENT, Persons



UNEMPLOYMENT, Persons



## 7

## TEENAGE LABOUR MARKET(a)

	<u>Employed</u>		<u>Unemployed</u>		Labour force	Not in labour force	Civilian population aged 15-19	Unemployment rate	Unemployment population ratio	Participation rate
	<i>Full-time</i>	<i>Total</i>	<i>Looking for full-time work</i>	<i>Total</i>						
	'000	'000	'000	'000						
ATTENDING NEITHER A SCHOOL NOR A TERTIARY INSTITUTION FULL-TIME										
<b>2001</b>										
November	6.4	8.2	1.9	2.0	10.2	1.9	12.2	19.9	16.7	84.0
<b>2002</b>										
November	5.8	7.5	1.9	1.9	9.4	2.0	11.4	20.6	17.0	82.5
<b>2003</b>										
September	5.8	7.2	*1.0	*1.1	8.3	1.5	9.9	13.5	11.4	84.7
October	5.7	8.4	*0.8	1.3	9.7	*0.8	10.4	13.0	12.1	92.5
November	7.3	9.0	1.4	1.5	10.5	1.3	11.7	14.2	12.6	89.1
ATTENDING SCHOOL OR A TERTIARY INSTITUTION FULL-TIME										
<b>2001</b>										
November	**0.1	5.7	*1.0	1.8	7.5	14.6	22.1	24.0	8.1	33.9
<b>2002</b>										
November	**0.1	6.8	*0.7	2.1	8.9	13.7	22.6	23.5	9.2	39.3
<b>2003</b>										
September	*0.6	8.2	*0.9	2.3	10.5	13.7	24.2	21.6	9.3	43.4
October	**0.1	8.5	*0.6	1.6	10.0	13.6	23.6	15.5	6.6	42.4
November	**0.3	8.1	**0.3	1.2	9.4	13.0	22.3	13.1	5.5	41.9
TOTAL										
<b>2001</b>										
November	6.5	13.9	2.9	3.8	17.7	16.5	34.3	21.6	11.2	51.7
<b>2002</b>										
November	5.9	14.2	2.6	4.0	18.3	15.7	34.0	22.1	11.9	53.8
<b>2003</b>										
September	6.3	15.4	1.9	3.4	18.8	15.2	34.0	18.0	10.0	55.3
October	5.8	16.9	1.4	2.8	19.7	14.4	34.0	14.3	8.3	57.8
November	7.6	17.1	1.7	2.7	19.8	14.3	34.1	13.7	8.0	58.2

(a) Persons aged 15-19 years. For explanation of terms and concepts, refer to *Labour Force, Australia* (cat. no. 6202.0). Care should be exercised when using these series as some estimates are subject to high sampling variability.

Source: ABS data available on request, *Labour Force, Estimates; Labour Force, Teenage Employment and Unemployment, Australia, Preliminary, Data Report* (cat. no. 6202.0.40.001).

## 8

## ALL EMPLOYED PERSONS BY OCCUPATION(a)(b)

	August 2002			August 2003		Proportion of total employed	
	Persons	Males	Females	Persons	August 2002	August 2003	
	'000	'000	'000	'000	%	%	
<b>Managers and administrators</b>							
Generalist managers	2.3	2.9	*0.5	3.3	1.2	1.6	
Specialist managers	5.4	3.6	1.3	4.9	2.8	2.4	
Farmers and farm managers	6.6	4.2	1.4	5.6	3.3	2.7	
<i>Total</i>	14.3	10.7	3.1	13.8	7.3	6.7	
<b>Professionals</b>							
Science, building and engineering professionals	3.8	3.3	*1.0	4.3	1.9	2.1	
Business and information professionals	6.1	4.1	2.1	6.2	3.1	3.0	
Health professionals	7.5	2.0	5.7	7.8	3.8	3.8	
Education professionals	9.3	3.3	6.9	10.2	4.7	5.0	
Social, arts and miscellaneous professionals	6.0	3.4	2.9	6.3	3.0	3.0	
<i>Total</i>	32.5	16.2	18.6	34.7	16.6	16.9	
<b>Associate professionals</b>							
Science, engineering and related associate professionals	3.6	1.6	*0.9	2.4	1.8	1.2	
Business and administration associate professionals	6.4	3.0	3.3	6.3	3.3	3.1	
Managing supervisors (sales and service)	8.0	5.7	4.4	10.1	4.1	4.9	
Health and welfare associate professionals	1.5	**0.3	1.2	1.6	0.8	0.8	
Other associate professionals	2.9	1.9	*0.8	2.7	1.5	1.3	
<i>Total</i>	22.4	12.4	10.6	23.1	11.4	11.2	
<b>Tradespersons and related workers</b>							
Mechanical and fabrication engineering tradespersons	4.6	5.3	—	5.3	2.3	2.6	
Automotive tradespersons	2.5	3.1	—	3.1	1.3	1.5	
Electrical and electronics tradespersons	3.4	4.5	**0.1	4.6	1.8	2.3	
Construction tradespersons	5.5	5.6	—	5.6	2.8	2.7	
Food tradespersons	1.9	1.2	*0.7	2.0	0.9	1.0	
Skilled agricultural and horticultural workers	1.2	1.6	**0.1	1.7	0.6	0.8	
Other tradespersons and related workers	4.1	2.4	2.0	4.4	2.1	2.2	
<i>Total</i>	23.2	23.8	3.0	26.8	11.8	13.0	
<b>Advanced clerical and service workers</b>							
Secretaries and personal assistants	2.4	**0.1	2.3	2.4	1.2	1.2	
Other advanced clerical and service workers	3.1	*0.8	3.5	4.3	1.6	2.1	
<i>Total</i>	5.5	*0.9	5.8	6.8	2.8	3.3	
<b>Intermediate clerical, sales and service workers</b>							
Intermediate clerical workers	20.3	5.2	17.2	22.4	10.4	10.9	
Intermediate sales and related workers	3.2	2.3	*0.7	3.0	1.6	1.5	
Intermediate service workers	12.9	2.5	11.1	13.5	6.6	6.6	
<i>Total</i>	36.4	9.9	29.0	38.9	18.5	18.9	
<b>Intermediate production and transport workers</b>							
Intermediate plant operators	4.9	5.2	—	5.2	2.5	2.5	
Intermediate machine operators	1.6	1.4	*0.6	2.0	0.8	1.0	
Road and rail transport drivers	5.9	5.4	*0.8	6.1	3.0	3.0	
Other intermediate production and transport workers	3.9	5.4	*0.9	6.3	2.0	3.1	
<i>Total</i>	16.3	17.4	2.2	19.6	8.3	9.6	
<b>Elementary clerical, sales and service workers</b>							
Elementary clerks	1.3	*0.8	*0.9	1.6	0.7	0.8	
Elementary sales workers	18.2	5.3	12.0	17.3	9.3	8.4	
Elementary service workers	1.8	1.3	*0.9	2.2	0.9	1.1	
<i>Total</i>	21.4	7.4	13.8	21.1	10.9	10.3	
<b>Labourers and related workers</b>							
Cleaners	6.0	1.9	4.2	6.1	3.0	3.0	
Factory labourers	6.7	2.4	1.2	3.5	3.4	1.7	
Other labourers and related workers	11.8	8.6	2.4	10.9	6.0	5.3	
<i>Total</i>	24.4	12.9	7.7	20.6	12.4	10.0	
<b>Total employed</b>	<b>196.5</b>	<b>111.6</b>	<b>93.8</b>	<b>205.4</b>	<b>100.0</b>	<b>100.0</b>	

(a) For explanation of terms and concepts, refer to *Australian Labour Market Statistics* (cat. no. 6105.0).

(b) Classified according to the Australian Standard Classification of Occupations (ASCO), Second edition.

Source: ABS data available on request, *Labour Force, Estimates*.

## 9

## EMPLOYED PERSONS BY INDUSTRY(a)(b)

	Number of Employees				
	August 2002	November 2002	February 2003	May 2003	August 2003
	'000	'000	'000	'000	'000
Agriculture, forestry and fishing	16.0	16.2	14.2	16.9	16.3
Mining	1.8	2.2	2.0	1.6	1.9
Manufacturing	21.3	22.0	22.7	22.8	20.9
Electricity, gas and water supply	1.9	2.0	1.8	1.7	2.3
Construction	12.0	11.6	12.1	12.3	13.0
Wholesale trade	7.7	9.3	9.9	9.0	8.4
Retail trade	30.5	31.3	32.6	35.2	34.5
Accommodation, cafes and restaurants	7.5	8.8	11.0	11.3	10.6
Transport and storage	8.9	7.7	7.9	7.9	8.5
Communication services	2.7	2.8	1.9	2.8	3.0
Finance and insurance	5.9	5.2	6.6	5.8	5.1
Property and business services	14.4	14.8	16.1	15.2	15.4
Government administration and defence	11.0	12.1	11.8	11.8	12.2
Education	16.0	16.4	15.1	16.9	16.7
Health and community services	24.1	24.4	20.7	21.9	23.5
Cultural and recreational services	5.9	5.6	5.2	4.5	4.4
Personal and other services	8.8	8.2	7.5	8.8	8.7
<b>Total all industries</b>	<b>196.5</b>	<b>200.6</b>	<b>199.1</b>	<b>206.6</b>	<b>205.4</b>

(a) For explanation of terms and concepts, refer to *Australian Labour Market Statistics* (cat. no. 6105.0).

(b) Small movements are subject to high sample variability and should be used with caution.

Source: ABS data available on request; Labour Force Survey.

## 10

## AVERAGE HOURS WORKED

	Average weekly total hours worked, all employed persons(a)		
	Males	Females	Persons
<b>2002</b>			
May	38.8	26.8	33.3
August	38.4	27.1	33.3
November	39.0	27.0	33.7
<b>2003</b>			
February	38.0	25.8	32.5
May	40.4	27.2	34.4
August	38.3	27.5	33.4

(a) For explanation of terms and concepts, refer to *Labour Force, Australia* (cat. no. 6203.0).

Source: ABS data available on request; Labour Force Survey.



# 11

## JOB VACANCIES(a)(b)

	no.	rate(c)
	'000	%
<b>2002</b>		
May	*1.7	*1.0
August	*2.2	*1.4
November	*2.1	*1.3
<b>2003</b>		
February	*2.1	*1.2
May	*2.0	*1.2
August	*1.9	*1.1

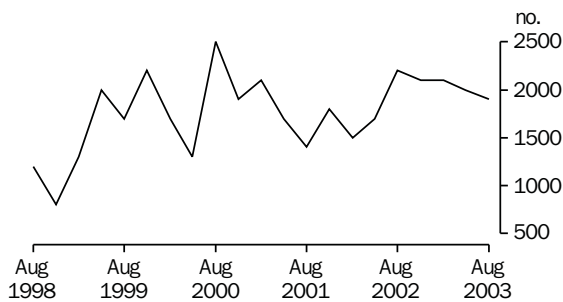
(a) For explanation of terms and concepts, refer to *Job Vacancies, Australia* (cat. no. 6354.0).

(b) Care should be exercised in using these series as some estimates are subject to high sampling variability.

(c) Job vacancies expressed as a percentage of the number of employees plus job vacancies.

Source: *Job Vacancies, Australia* (cat. no. 6354.0).

### JOB VACANCIES, TASMANIA



# 12

## INDUSTRIAL DISPUTES(a)

	Working days lost '000	Twelve months ended	Working days lost per thousand employees no.
<b>2002</b>			
August	0.1	August	18
September	—	September	18
October	—	October	18
November	0.1	November	19
December	1.2	December	20
<b>2003</b>			
January	—	January	20
February	—	February	20
March	—	March	10
April	—	April	10
May	—	May	10
June	—	June	9
July	—	July	9
August	—	August	8

(a) For explanation of terms and concepts, refer to *Industrial Disputes, Australia* (cat. no. 6321.0).

Source: *Industrial Disputes, Australia* (cat. no. 6321.0).

## AVERAGE WEEKLY EARNINGS OF EMPLOYEES(a) — ORIGINAL AND TREND

	Males			Females			Persons		
	Full-time adult ordinary time earnings	Full-time adult total earnings	All males total earnings	Full-time adult ordinary time earnings	Full-time adult total earnings	All females total earnings	Full-time adult ordinary time earnings	Full-time adult total earnings	All employees total earnings
ORIGINAL									
<b>2002</b>									
May	828.00	869.40	713.90	720.10	735.70	451.80	790.00	822.40	579.10
August	841.60	877.90	740.20	748.90	762.20	473.80	812.80	841.80	611.50
November	849.80	887.70	767.60	758.40	772.70	490.40	820.80	851.30	628.20
<b>2003</b>									
February	863.00	903.20	780.40	748.30	762.70	481.90	826.00	858.10	629.90
May	864.00	904.20	759.10	761.90	775.20	485.80	831.10	862.60	619.30
August	864.80	903.30	757.80	758.10	766.20	496.30	831.40	860.40	631.50
TREND(b)									
<b>2002</b>									
May	834.10	872.50	722.80	730.10	746.00	460.20	798.10	828.80	590.30
August	842.20	881.20	743.40	743.10	757.40	473.30	809.50	840.30	608.90
November	850.30	889.00	762.30	751.70	765.10	481.90	819.20	849.80	622.40
<b>2003</b>									
February	858.00	896.60	768.20	755.20	768.80	485.00	825.50	856.40	625.70
May	864.70	904.10	767.40	758.90	772.20	488.40	830.80	862.10	627.00
August	870.90	912.00	766.60	764.20	776.30	493.50	836.40	868.20	630.60

(a) For explanation of terms and concepts, refer to *Average Weekly Earnings, Australia* (cat. no. 6302.0).

(b) ABS trend estimates for the most recent months are revised, see Notes on page 2.

Source: *Average Weekly Earnings, Australia* (cat. no. 6302.0).

	Index numbers				Percentage change	
	Dec qtr 2002	Mar qtr 2003	Jun qtr 2003	Sep qtr 2003	Mar qtr 2003 to Jun qtr 2003	Jun qtr 2003 to Sep qtr 2003
SELECTED INDUSTRIES(c)						
Manufacturing	115.9	116.3	117.6	118.1	1.1	0.4
Retail trade	114.2	115.0	115.6	117.1	0.5	1.3
Government administration and defence	114.7	115.2	115.2	117.3	—	1.8
Education	119.9	120.0	123.0	124.1	2.5	0.9
Health and community services	115.0	115.2	115.5	118.3	0.3	2.4
<b>All industries(d)</b>	<b>116.2</b>	<b>116.6</b>	<b>117.4</b>	<b>119.0</b>	<b>0.7</b>	<b>1.4</b>
SELECTED OCCUPATIONS						
Professionals	118.1	118.3	120.3	122.0	1.7	1.4
Associate professionals	116.6	117.0	117.1	118.9	0.1	1.5
Tradespersons & related workers	114.6	115.0	116.0	116.9	0.9	0.8
Intermediate clerical, sales & service workers	116.1	116.4	116.6	118.3	0.2	1.5
Intermediate production & transport workers	117.0	117.4	118.8	119.8	1.2	0.8
Elementary clerical, sales & service workers	115.5	116.0	116.8	118.9	0.7	1.8
Labourers & related workers	114.7	114.9	116.0	117.8	1.0	1.6
<b>All occupations</b>	<b>116.2</b>	<b>116.6</b>	<b>117.4</b>	<b>119.0</b>	<b>0.7</b>	<b>1.4</b>

(a) Base of each index: September quarter 1997 = 100.0.

(b) These indexes are a measure of quarterly changes in wage and salary costs for employee jobs. They are one of four sets of indexes that together comprise the Wage Cost Index. For explanation of terms and concepts, refer to *Wage Cost Index, Australia* (cat. no. 6345.0).

(c) Industry is shown at the ANZSIC division level for selected divisions.

(d) Excludes Agriculture, forestry and fishing.

Source: ABS data available on request; Wage Cost Index.

# 15

## SUMMARY OF ANNUAL MOVEMENTS IN WAGES AND PRICES(a), PERCENTAGE CHANGE FROM PREVIOUS YEAR — ORIGINAL

	CPI	Price index of materials used in house building	Price index of materials used in building other than house building	Average weekly total earnings, full-time adult employees(b)
	all groups—Hobart	all groups—Hobart	all groups—Hobart	
	%	%	%	%
<b>2000-01</b>	5.8	1.8	0.3	3.2
<b>2001-02</b>	2.0	1.9	1.7	4.6
<b>2002-03</b>	3.3	4.1	2.4	—
<b>2001</b>				
September	1.1	1.7	2.0	2.6
December	2.1	1.6	1.2	-4.4
<b>2002</b>				
March	2.3	1.8	1.2	6.1
June	2.7	2.3	2.2	5.2
September	3.5	3.4	2.7	7.2
December	3.1	3.9	2.7	5.2
<b>2003</b>				
March	3.6	4.7	2.1	4.9
June	2.8	4.5	2.1	4.9
September	2.6	4.0	2.0	2.2

(a) See note 5 on page 2 of this issue on the impacts of The New Tax System (TNTS).

(b) March, June, September and December data relates to February, May, August and November survey dates as published in *Average Weekly Earnings, Australia* (cat. no. 6302.0).

Source: ABS data available on request; *Producer Price Index* (cat. no. 6427.0); *Consumer Price Index, Australia* (cat. no. 6401.0); *Average Weekly Earnings, Australia* (cat. no. 6302.0).

# 16

## HOUSE PRICE INDEX NUMBERS(a)(b)

	Established house price index		Project home price index	
	Index	% change(c)	Index	% change(c)
<b>2000-01</b>	134.2	4.0	140.7	11.5
<b>2001-02</b>	140.1	4.4	145.1	3.1
<b>2002-03</b>	157.1	12.1	158.5	9.2
<b>2001</b>				
September	134.9	-0.1	142.7	0.6
December	138.3	2.5	143.4	0.5
<b>2002</b>				
March	142.1	2.7	144.6	0.8
June	144.9	2.0	149.7	3.5
September	148.9	2.8	152.5	1.9
December	150.8	1.3	154.4	1.2
<b>2003</b>				
March	160.9	6.7	161.2	4.4
June	167.9	4.4	165.7	2.8
September	177.4	5.7	166.7	0.6

(a) Base of each Index: 1989-90 = 100.0.

(b) Used in calculating the mortgage interest charges component of the Consumer Price Index.

(c) Percentage change over previous period.

Source: *House Price Indexes: Eight Capital Cities* (cat. no. 6416.0).

Hobart

	Food	Clothing and Footwear	Housing	Household furnishings, supplies and services	Transportation	Alcohol and tobacco
<b>2000</b>						
September	130.9	112.8	105.5	124.5	133.3	179.8
December	132.0	112.9	105.8	124.6	130.4	181.6
<b>2001</b>						
March	134.3	110.7	106.9	125.6	131.4	185.4
June	136.0	112.2	107.2	126.6	134.6	188.6
September	135.7	109.3	107.4	127.3	131.5	189.4
December	138.2	113.9	107.8	126.9	130.4	189.5
<b>2002</b>						
March	140.4	110.9	109.0	127.6	131.3	191.5
June	141.1	113.3	110.3	127.4	135.9	193.0
September	142.0	107.4	112.4	127.7	134.9	195.5
December	143.0	108.3	113.0	127.8	136.3	196.3
<b>2003</b>						
March	146.0	104.3	115.2	127.5	139.0	198.9
June	146.5	110.1	116.9	128.8	134.3	203.3
September	146.4	103.3	118.3	128.4	136.7	206.5

Hobart

Weighted average of eight capital cities

	Health	Education	Index, all groups	% change over previous period, all groups	Index	% change over previous period
<b>2000</b>						
September	178.0	206.5	131.3	3.8	130.9	3.7
December	177.4	206.5	131.2	-0.1	131.3	0.3
<b>2001</b>						
March	181.5	215.1	132.1	0.7	132.7	1.1
June	181.4	215.1	133.4	1.0	133.8	0.8
September	180.3	215.0	132.8	-0.4	134.2	0.3
December	180.5	215.0	133.9	0.8	135.4	0.9
<b>2002</b>						
March	185.8	221.9	135.2	1.0	136.6	0.9
June	193.6	221.9	137.0	1.3	137.6	0.7
September	193.4	222.7	137.5	0.4	138.5	0.7
December	192.9	222.7	138.0	0.4	139.5	0.7
<b>2003</b>						
March	200.7	233.2	140.0	1.4	141.3	1.3
June	209.1	233.4	140.8	0.6	141.3	—
September	207.8	233.6	141.1	0.2	142.1	0.6

(a) Base year: 1989-90 = 100.0.

(b) Further information on construction of CPI indexes is contained in the bulletin *Australian Consumer Price Index Concepts, Sources and Methods* (cat. no. 6461.0).(c) As a result of the introduction of the 14th Series Australian CPI there have been changes to some groups and restructuring of some others. See Appendix A2 of the September quarter issue 2000 of *Consumer Price Index, Australia* (cat. no. 6401.0) for more information.

(d) See Note 5 on page 2 of this issue on the impacts of The New Tax System (TNTS) introduced on 1 July 2000.

Source: *Consumer Price Index, Australia* (cat. no. 6401.0).

*Index numbers for selected major building materials*

	<i>Structural timber</i>	<i>Clay bricks</i>	<i>Ready mixed concrete</i>	<i>Precast concrete products</i>	<i>Steel decking, cladding etc.</i>	<i>Structural steel</i>
<b>2000-01</b>	120.6	132.6	117.9	131.6	107.6	129.3
<b>2001-02</b>	123.0	137.0	122.7	131.6	104.4	130.2
<b>2002-03</b>	126.3	145.5	134.4	131.6	110.2	132.4
<b>2001</b>						
September	122.3	135.3	117.0	131.6	107.7	129.4
December	123.1	135.3	116.7	131.6	105.6	129.4
<b>2002</b>						
March	123.2	137.6	124.0	131.6	102.5	131.0
June	123.4	139.9	133.2	131.6	101.8	131.0
September	124.0	143.9	133.8	131.6	107.8	132.1
December	124.8	144.0	134.0	131.6	107.0	132.1
<b>2003</b>						
March	126.1	147.0	134.0	131.6	113.1	132.1
June	130.1	147.0	135.9	131.6	112.9	133.1
September	131.0	147.1	137.3	137.9	111.2	133.1

*Index numbers for selected major building materials*

	<i>Reinforcing steel bar, fabric and mesh</i>	<i>Aluminium windows</i>	<i>Fabricated steel products</i>	<i>Builders hardware</i>	<i>Sand and aggregate</i>	<i>Paint and other coatings</i>	<i>Non-ferrous pipes and fittings</i>
<b>2000-01</b>	107.8	116.8	114.0	119.3	147.9	135.0	185.6
<b>2001-02</b>	107.9	120.3	114.9	123.4	148.7	137.6	180.9
<b>2002-03</b>	110.8	121.5	128.8	123.2	157.6	142.2	176.4
<b>2001</b>							
September	107.8	120.3	113.9	123.4	147.1	137.6	183.2
December	107.9	120.3	114.4	123.6	147.4	137.4	178.1
<b>2002</b>							
March	107.9	120.3	111.4	123.3	147.4	137.6	182.0
June	107.9	120.3	119.7	123.3	152.9	137.9	180.2
September	110.3	120.3	129.7	123.2	157.2	140.2	176.4
December	110.3	120.3	129.7	123.2	157.2	142.4	176.4
<b>2003</b>							
March	110.7	120.3	126.7	123.2	157.2	141.9	176.4
June	111.7	124.9	128.9	123.3	158.8	144.1	176.4
September	112.9	124.9	132.3	123.3	156.5	145.2	180.4

For footnotes see end of table.

...continued

	<i>All electrical materials</i>		<i>All mechanical services</i>		<i>All plumbing materials</i>	
	<i>Index</i>	<i>% change over previous period</i>	<i>Index</i>	<i>% change over previous period</i>	<i>Index</i>	<i>% change over previous period</i>
<b>2000-01</b>	117.3	-0.3	118.2	-1.7	132.7	4.5
<b>2001-02</b>	118.5	1.0	120.9	2.3	132.4	-0.2
<b>2002-03</b>	117.9	-0.5	122.5	1.3	135.1	2.0
<b>2001</b>						
September	118.2	0.3	119.8	0.7	131.8	-1.6
December	118.7	0.4	120.1	0.3	130.4	-1.1
<b>2002</b>						
March	119.5	0.7	121.8	1.4	133.4	2.3
June	117.7	-1.5	122.0	0.2	133.8	0.3
September	117.5	-0.2	122.1	0.1	135.0	0.9
December	117.6	0.1	122.5	0.3	135.3	0.2
<b>2003</b>						
March	117.8	0.2	122.6	0.1	134.8	-0.4
June	118.6	0.7	122.6	—	135.2	0.3
September	119.6	0.8	123.3	0.6	136.8	1.2

	<i>All groups excluding electrical materials and mechanical services</i>		<i>All groups</i>	
	<i>Index</i>	<i>% change over previous period</i>	<i>Index</i>	<i>% change over previous period</i>
<b>2000-01</b>	120.5	1.2	119.3	0.3
<b>2001-02</b>	122.1	1.3	121.3	1.7
<b>2002-03</b>	125.7	2.9	124.2	2.4
<b>2001</b>				
September	121.2	-0.1	120.3	0.2
December	121.2	—	120.5	0.2
<b>2002</b>				
March	122.2	0.8	121.6	0.9
June	123.8	1.3	122.8	1.0
September	124.9	0.9	123.5	0.6
December	125.1	0.2	123.7	0.2
<b>2003</b>				
March	125.6	0.4	124.2	0.4
June	127.2	1.3	125.4	1.0
September	127.9	0.6	126.0	0.5

(a) Base year: 1989-90 = 100.0.

Source: ABS data available on request; Producer Price Index (cat. no. 6427.0).

	<i>Dairy products(a)</i>			<i>Staff hours worked</i>	
	<i>Whole milk(b)</i>	<i>Factory butter(c)</i>	<i>Factory cheese(d)</i>	<i>Textile manufacturing(e)</i>	<i>Vegetable preserving</i>
	<i>million litres</i>	<i>tonnes</i>	<i>tonnes</i>	<i>'000</i>	<i>'000</i>
<b>2000-01</b>	589.7	5 949	32 355	938	1 037
<b>2001-02</b>	671.4	7 368	35 155	975	1 062
<b>2002-03</b>	585.4	na	31 632	1 022	1 344
<b>2002</b>					
October	82.8	na	2 711	99	82
November	84.4	na	3 683	97	99
December	77.7	na	4 312	67	118
<b>2003</b>					
January	63.4	na	3 615	70	97
February	48.1	na	3 208	85	134
March	42.4	na	3 337	87	131
April	34.9	na	2 251	78	136
May	31.8	na	2 113	96	164
June	20.0	na	1 651	73	125
July	14.6	na	na	90	126
August	26.3	na	na	84	129
September	54.4	na	na	77	84
October	78.1	na	na	87	112
		<i>Refined zinc</i>	<i>Metallurgical refining</i>		<i>Electricity</i>
		<i>'000 tonnes</i>	<i>Index(f)</i>		<i>million kW.h</i>
<b>2000-01</b>		233.1	138.4		10 150
<b>2001-02</b>		251.7	140.8		10 210
<b>2002-03</b>		253.4	144.1		10 460
<b>2002</b>					
October		19.6	143.7		..
November		20.2	142.2		..
December		21.0	145.7		(Dec qtr) 2 530
<b>2003</b>					
January		21.1	146.7		..
February		19.9	132.8		..
March		22.2	148.0		(Mar qtr) 2 430
April		22.0	145.8		..
May		23.2	150.6		..
June		22.4	149.4		(Jun qtr) 2 700
July		20.3	146.0		..
August		19.6	141.7		..
September		22.0	144.5		(Sep qtr) 2 920
October		22.5	149.5		..

(a) Source: Australian Dairy Corporation.

(b) Includes the whole milk equivalent of farm cream intake.

(c) Includes butter equivalent of butter oil. From July 2002 the Australian Dairy Corporation advised that Factory butter production data are confidential.

(d) From July 2003 the Australian Dairy Corporation advised that factory cheese production data are confidential.

(e) Includes spinning, weaving and carpet making. Reported by establishments which manufacture textiles only, or manufacture clothing and textiles in the one plant.

(f) Metallurgical refining index (Base year: 1979-80 = 00.0). Output from selected establishments covering the smelting and refining of ferro-alloys, zinc and aluminium. The weighting pattern is based on the establishments' value added as derived from the 1979-80 manufacturing census. For multi-product establishments, value added was apportioned to products on the basis of gross receipts from each product.

Source: ABS data available on request; Employees Hours Worked Survey; Monthly Production Survey; Manufacturing Survey.



## 20

### LIVESTOCK SLAUGHTERING — ORIGINAL

	Cattle					
	Bulls, bullocks and steers	Cows and heifers	Calves	Sheep	Lambs	Pigs
	'000	'000	'000	'000	'000	'000
<b>2000-01</b>	90.2	94.2	49.7	364.7	416.1	57.6
<b>2001-02</b>	80.6	79.4	44.6	275.8	426.4	53.1
<b>2002-03</b>	79.9	112.9	41.2	388.3	374.0	47.7
<b>2001</b>						
October	5.9	6.6	5.2	24.2	35.1	4.8
<b>2002</b>						
October	5.2	9.5	5.2	18.0	32.6	3.6
November	7.6	10.8	1.3	24.7	32.6	4.4
December	6.1	8.0	0.4	27.7	25.8	5.0
<b>2003</b>						
January	8.4	11.6	0.3	45.2	35.9	4.0
February	7.8	10.8	0.2	47.9	31.7	3.5
March	7.0	11.5	0.5	55.5	28.1	3.6
April	6.1	12.7	1.0	41.4	23.8	3.5
May	7.6	13.5	1.1	47.5	34.0	4.3
June	5.0	10.7	0.8	27.5	30.7	3.8
July	4.0	10.9	1.4	30.4	39.5	4.0
August	4.8	7.7	16.8	19.1	38.6	3.9
September	4.3	7.0	15.5	21.8	27.3	3.7
October	7.4	7.5	7.1	26.9	33.6	3.8

Source: ABS data available on request; Livestock Slaughtered.

## 21

### LIVESTOCK SLAUGHTERING — SEASONALLY ADJUSTED(a) AND TREND(b)

	Seasonally adjusted			Trend		
	Cattle and calves	Sheep and lambs	Pigs	Cattle and calves	Sheep and lambs	Pigs
	'000	'000	'000	'000	'000	'000
<b>2001</b>						
October	18.1	69.8	5.1	17.3	66.8	4.9
<b>2002</b>						
October	20.7	56.8	3.9	20.0	59.3	4.3
November	22.9	59.7	4.8	21.3	59.3	4.4
December	21.2	57.3	4.3	22.4	60.5	4.4
<b>2003</b>						
January	24.6	64.4	4.8	22.9	62.2	4.3
February	23.2	63.6	3.9	22.6	64.2	4.2
March	21.7	68.9	3.3	21.7	66.3	4.0
April	20.4	66.6	3.6	20.8	68.2	3.8
May	19.7	71.7	3.9	20.3	69.5	3.8
June	18.2	61.5	3.5	20.2	70.0	3.8
July	19.6	80.0	4.1	20.6	69.9	3.8
August	24.6	69.5	4.1	21.0	69.3	3.9
September	21.7	67.1	3.7	21.3	68.3	3.9
October	19.7	62.9	3.8	21.5	67.2	3.9

(a) Seasonally adjusted factors are reviewed annually to take account of each additional year's original data. The results of the review are used to compile revised seasonally adjusted and trend estimates; see Notes page 2.

(b) ABS trend estimates for the most recent months are revised; see Notes page 2.

Source: ABS data available on request; Livestock Slaughtered.

## 22

### MEAT PRODUCTION(a)

	<i>Beef</i>	<i>Veal</i>	<i>Mutton</i>	<i>Lamb</i>	<i>Pig meat(b)</i>	<i>Total</i>
	<i>tonnes</i>	<i>tonnes</i>	<i>tonnes</i>	<i>tonnes</i>	<i>tonnes</i>	<i>tonnes</i>
<b>2000-01</b>	48 771	996	7 232	8 014	3 583	68 596
<b>2001-02</b>	43 923	899	5 416	8 466	3 159	61 863
<b>2002-03</b>	51 376	826	7 495	7 439	2 715	69 851
<b>2001</b>						
October	3 401	100	475	687	296	4 960
<b>2002</b>						
October	3 825	101	348	690	207	5 171
November	5 041	27	482	634	250	6 433
December	3 984	10	541	493	272	5 300
<b>2003</b>						
January	5 637	9	885	706	223	7 460
February	5 135	7	925	613	196	6 876
March	4 872	14	1 076	552	206	6 720
April	4 765	23	793	461	192	6 233
May	5 538	26	903	682	248	7 396
June	4 026	19	532	613	219	5 408
July	3 727	30	582	803	227	5 368
August	3 332	322	370	778	225	5 026
September	3 061	301	430	556	204	4 553
October	3 940	139	535	651	211	5 476

(a) Carcass weight.

(b) Includes pork used for production of bacon and ham.

Source: ABS data available on request; Livestock Slaughtered.

## 23

### PRINCIPAL MINERAL CONCENTRATES PRODUCED

	<i>Copper</i>	<i>Iron (pellets)</i>	<i>Lead</i>	<i>Tin</i>	<i>Zinc</i>
	<i>'000 tonnes</i>	<i>'000 tonnes</i>	<i>'000 tonnes</i>	<i>'000 tonnes</i>	<i>'000 tonnes</i>
<b>2000-01</b>	105.4	2 027.3	40.6	14.8	143.2
<b>2001-02</b>	115.0	2 151.6	35.6	12.4	138.7
<b>2002-03</b>	108.1	2 142.3	42.2	nya	141.9
<b>2001</b>					
September	32.5	487.8	8.9	3.1	35.2
December	30.9	554.1	8.4	3.6	37.9
<b>2002</b>					
March	28.0	533.5	9.9	2.7	33.3
June	23.6	576.3	8.5	3.0	32.4
September	34.5	513.1	9.7	3.7	39.0
December	25.4	516.3	9.2	1.7	31.4
<b>2003</b>					
March	25.6	578.7	12.4	2.4	35.0
June	22.7	534.2	10.8	nya	36.5
September	22.9	560.8	9.2	nya	34.0

Source: Mineral Resources Tasmania, Department of Infrastructure, Energy and Resources.

	<i>Tasmanian-grown logs delivered</i>					<i>Sawn, peeled and sliced timber produced(b)</i>				
	<i>Eucalypts</i>	<i>Hardwoods, excluding eucalypts(c)</i>	<i>Plant- ation(d) softwoods</i>	<i>Native soft- woods(e)</i>	<i>Total</i>	<i>Eucalypts</i>	<i>Hardwoods, excluding eucalypts(c)</i>	<i>Plant- ation(d) softwoods</i>	<i>Native soft- woods(e)</i>	<i>Total</i>
	'000 m <sup>3</sup>	'000 m <sup>3</sup>	'000 m <sup>3</sup>	'000 m <sup>3</sup>	'000 m <sup>3</sup>	'000 m <sup>3</sup>	'000 m <sup>3</sup>	'000 m <sup>3</sup>	'000 m <sup>3</sup>	'000 m <sup>3</sup>
<b>2000-01</b>	468.5	24.8	369.9	2.6	865.8	157.9	6.3	174.1	0.2	338.6
<b>2001-02</b>	513.9	31.7	447.2	0.9	993.8	170.2	8.1	208.9	0.3	387.4
<b>2002-03</b>	525.0	25.9	509.8	2.5	1 063.2	163.3	6.7	228.0	0.5	398.5
<b>2001</b>										
September	129.8	5.6	115.9	0.1	251.4	42.1	1.8	50.9	0.1	95.0
December	115.0	8.9	94.3	0.1	218.4	37.8	2.2	48.4	0.1	88.3
<b>2002</b>										
March	116.2	10.3	121.6	0.3	248.5	41.6	2.7	53.6	0.1	97.9
June	152.8	6.9	115.4	0.3	275.4	48.7	1.4	56.0	0.1	106.2
September	143.4	5.4	122.3	0.2	271.3	44.7	1.4	58.8	0.1	105.0
December	142.6	5.3	143.6	1.0	292.5	41.3	1.8	55.9	0.1	99.1
<b>2003</b>										
March	113.8	8.1	124.8	0.5	247.1	36.5	1.6	56.5	0.1	94.6
June	125.2	7.1	119.2	0.8	252.3	40.9	1.9	56.9	0.2	99.8
September	157.2	4.9	133.2	0.2	295.4	46.4	1.7	64.4	—	112.5

(a) Separate data for logs delivered and sourced from Crown and Private land is available on request.

(b) Includes plywood, veneer and sliced timber production converted to an equivalent cubic measurement.

(c) Includes blackwood, myrtle, sassafras etc.

(d) Radiata pine.

(e) Includes Huon pine, Celery Top pine and King William pine.

Source: ABS data available on request, Forest Products Survey.

	Dwelling units						Non-residential buildings(d)		Value(e)
	New houses	New other residential buildings(a)	Other dwelling units created (conversions etc.)(b)	Total dwelling units	New dwelling units	Alterations and additions to residential buildings(c)	Private	Total	Total of all building
	no.	no.	no.	no.	\$m	\$m	\$m	\$m	\$m
<b>2000-01</b>	1 108	80	10	1 198	127.5	43.1	95.2	152.5	323.0
<b>2001-02</b>	1 878	141	13	2 032	221.0	51.7	113.6	168.0	440.7
<b>2002-03</b>	r 1 964	164	17	r 2 145	r 261.9	r 62.8	r 148.1	r 201.2	r 526.0
<b>2002</b>									
October	151	19	2	172	19.4	r 6.3	8.5	10.3	r 36.1
November	r 145	3	—	r 148	r 17.3	3.4	6.2	12.5	r 33.2
December	189	9	—	198	24.3	5.6	r 7.5	r 9.9	r 39.8
<b>2003</b>									
January	r 138	2	2	r 142	r 18.5	r 5.4	18.6	24.1	r 48.1
February	146	4	2	152	18.3	5.1	9.5	17.0	40.4
March	r 177	7	1	r 185	r 23.2	r 5.7	15.5	17.4	r 46.3
April	146	23	4	173	22.5	3.9	9.7	20.5	46.8
May	186	62	3	251	26.8	6.4	15.4	16.0	49.2
June	167	21	1	189	26.9	6.3	15.3	27.6	60.8
July	223	36	1	260	40.3	6.7	r 23.5	r 31.3	r 78.3
August	231	8	8	247	32.6	7.3	10.1	13.0	52.9
September	r 224	12	1	r 237	r 32.6	r 6.6	r 6.6	r 6.6	r 45.8
October	218	12	8	238	31.5	7.9	13.1	18.1	57.5

(a) New individual dwelling units (e.g. flats, home units and villa units).

(b) From alterations and additions to residential building, conversions of non-residential building to residential building etc.

(c) Valued at \$10,000 and over. Includes conversions and dwelling units approved as part of alterations and additions or as part of the construction of non-residential building.

(d) Comprises non-residential building (new plus alterations and additions) valued at \$50,000 and over.

(e) Value data from July 2000 reference month onward are recorded inclusive of GST. See *Building Approvals, Australia* (cat. no. 8731.0) or page 2 of this publication for more details.

Source: *Building Approvals, Australia* (cat. no. 8731.0).

	Total number of dwellings(a)			Total value of commitments(b)		
	Original	Seasonally adjusted(c)	Trend(c)	Original	Seasonally adjusted(c)	Trend(c)
	no.	no.	no.	\$m	\$m	\$m
<b>2002</b>						
October	1 158	1 107	1 101	105	101	99
November	1 153	1 110	1 104	105	100	102
December	1 174	1 146	1 104	111	107	104
<b>2003</b>						
January	977	1 121	1 101	91	112	106
February	1 015	1 049	1 104	99	102	108
March	1 152	1 119	1 117	114	109	111
April	1 074	1 128	1 148	106	117	115
May	1 283	1 171	1 194	128	118	121
June	1 249	1 288	1 247	128	130	127
July	1 365	1 321	1 297	142	134	133
August	1 303	1 305	1 337	135	134	138
September	1 354	1 411	1 369	144	146	142
October	1 405	1 365	1 394	151	145	146

(a) Includes new dwellings, established dwellings and refinancing. Excludes alterations and additions.

(b) Commitment is a firm offer of housing finance. It either has been, or is normally expected to be, accepted. Includes commitments to provide housing finance to employees and commitments accepted and cancelled in the same month. Excludes alterations and additions. Includes refinancing.

(c) New seasonal factors based on the concurrent adjustment method have been incorporated, resulting in revisions to all seasonally adjusted and trend series.

Source: *Housing Finance for Owner Occupation, Australia (cat. no. 5609.0)*.

	Asset			Industry			
	<i>Buildings and structures</i>	<i>Equipment, plant and machinery</i>	<i>Total asset</i>	<i>Mining</i>	<i>Manufacturing</i>	<i>Other selected industries</i>	<i>Total all industries</i>
	\$m	\$m	\$m	\$m	\$m	\$m	\$m
<b>2000-01</b>	r 134	r 467	600	87	162	352	600
<b>2001-02</b>	r 445	518	r 963	57	154	752	r 963
<b>2002-03</b>	r 255	r 628	r 883	r 45	240	r 599	r 883
<b>2001</b>							
September	67	122	189	15	41	134	189
December	103	107	210	11	42	157	210
<b>2002</b>							
March	136	120	256	17	36	203	256
June	138	169	307	14	35	258	307
September	88	101	189	9	33	147	189
December	55	213	268	13	69	186	268
<b>2003</b>							
March	73	151	224	14	89	121	224
June	r 39	r 164	r 203	r 9	49	r 145	r 203
September	17	141	158	5	33	120	158

(a) Estimates based on a sample survey and therefore subject to sampling variability. Covers selected industries only — mining, manufacturing, and other selected industries.

(b) Current prices.

(c) See *Private New Capital Expenditure and Expected Expenditure* (cat. no. 5625.0) or page 2 of this issue on the impacts of The New Tax System (TNTS) introduced on 1 July 2000.

(d) There have been significant revisions to all data contained in this issue. For more information see "Revisions in this Issue" on pages 3 and 4 of *Private New Capital Expenditure and Expected Expenditure, September Quarter 2002* (cat. no. 5625.0).

Source: *Private New Capital Expenditure and Expected Expenditure* (cat. no. 5625.0).

	<i>Establish- ments</i>	<i>Guest rooms</i>	<i>Bed spaces</i>	<i>Persons employed</i>	<i>Room nights occupied</i>	<i>Room occupancy rate</i>	<i>Guest nights</i>	<i>Bed occupancy rate</i>	<i>Guest arrivals</i>	<i>Takings from accommodation(b)</i>
	<i>no.</i>	<i>no.</i>	<i>no.</i>	<i>no.</i>	<i>'000</i>	<i>%</i>	<i>'000</i>	<i>%</i>	<i>'000</i>	<i>\$'000</i>
<b>LICENSED HOTELS WITH FACILITIES</b>										
<b>2002</b>										
March qtr	53	2 899	7 945	2 700	166.9	64.0	286.0	40.0	158.4	15 745
<b>2003</b>										
January	na	na	na	na	52.0	59.1	95.8	39.1	52.3	5 188
February	na	na	na	na	53.9	67.7	89.7	40.6	50.5	5 266
March	na	na	na	na	64.4	73.1	106.4	43.5	59.0	6 433
March qtr	52	2 840	7 898	2 468	170.3	66.6	291.9	41.1	161.8	16 888
<b>MOTELS AND GUEST HOUSES WITH FACILITIES</b>										
<b>2002</b>										
March qtr	49	1 650	5 124	695	99.2	66.8	199.9	43.3	107.7	9 216
<b>2003</b>										
January	na	na	na	na	38.2	68.6	82.1	49.1	42.5	4 003
February	na	na	na	na	36.1	71.8	69.5	46.0	38.7	3 557
March	na	na	na	na	43.0	77.3	83.6	50.0	47.2	4 171
March qtr	55	1 795	5 394	1 050	117.3	72.6	235.2	48.4	128.5	11 731
<b>SERVICED APARTMENTS</b>										
<b>2002</b>										
March qtr	26	1 009	3 407	531	62.7	69.0	144.5	47.1	61.1	7 463
<b>2003</b>										
January	na	na	na	na	25.8	73.7	67.8	55.3	28.7	3 252
February	na	na	na	na	23.4	74.1	50.8	45.9	23.5	2 738
March	na	na	na	na	27.8	79.6	60.7	49.4	27.8	3 306
March qtr	31	1 128	3 958	559	77.0	75.9	179.3	50.3	80.0	9 297
<b>TOTAL ESTABLISHMENTS</b>										
<b>2002</b>										
March qtr	128	5 558	16 476	3 926	328.8	65.7	630.4	42.5	327.3	32 424
<b>2003</b>										
January	na	na	na	na	116.0	64.9	245.7	45.9	123.5	12 444
February	na	na	na	na	113.4	70.3	210.0	43.5	112.8	11 562
March	na	na	na	na	135.2	75.7	250.7	46.9	134.0	13 911
March qtr	138	5 763	17 250	4 077	364.6	70.3	706.4	45.5	370.3	37 916

(a) Comprising establishments with 15 or more rooms or units. For explanation of terms and concepts refer to *Tourist Accommodation, Australia* (cat. no. 8635.0).

(b) 'Takings from accommodation' after 1 July 2000 are recorded inclusive of GST. See *Tourist Accommodation, Australia* (cat. no. 8635.0) or page 2 of this publication for more details.

Source: *Tourist Accommodation, Australia* (cat. no. 8635.0). For more detailed information, see *Tourist Accommodation, Small Area Data, Tasmania* (cat. no. 8635.6.40.001).

## Tasmanian National Park attendance

	<i>Cradle Mountain(b)</i> <i>(Lake Dove)</i>	<i>Lake St Clair(b)</i> <i>(Cynthia Bay)</i>	<i>Mt Field(b)</i>	<i>Freycinet(c)</i>	<i>Narawntapu(d)</i> <i>(Bakers Beach)</i>	<i>Mole Creek Karst(e)</i> <i>(Marakoopa Cave)</i>	<i>Maria Island(f)</i> <i>(Darlington)</i>
	<i>no.</i>	<i>no.</i>	<i>no.</i>	<i>no.</i>	<i>no.</i>	<i>no.</i>	<i>no.</i>
<b>2000-01</b>	168 700	111 800	138 700	273 000	34 300	26 788	12 820
<b>2001-02</b>	178 600	107 800	133 900	273 300	35 800	26 103	12 598
<b>2002-03</b>	209 000	134 500	147 200	318 000	38 900	28 648	13 337
<b>2002</b>							
October	14 300	10 300	9 800	p 19 500	2 400	2 328	983
November	17 200	12 300	12 000	p 27 100	4 200	2 711	1 509
December	23 400	14 400	16 700	p 36 600	4 700	4 506	1 479
<b>2003</b>							
January	34 900	22 600	24 900	p 57 800	7 100	4 505	2 025
February	22 700	18 000	16 700	p 39 700	4 000	2 676	1 366
March	24 900	18 500	15 700	p 36 700	4 200	2 632	1 576
April	26 600	16 400	16 300	p 32 400	3 900	2 837	1 344
May	11 400	6 700	9 600	p 16 000	1 800	1 652	886
June	8 900	3 700	5 700	p 11 100	1 700	1 428	489
July	10 200	3 800	5 900	p 10 800	1 300	929	280
August	8 700	2 800	6 200	p 10 700	1 600	809	187
September	13 900	6 700	9 000	p 16 800	2 100	2 077	527
October	17 200	10 500	11 500	p 22 900	2 500	2 062	774

(a) A 'person entry' occurs whenever a visitor enters a National Park. Freycinet data, in particular, reflects repeat entries. Measurement occurs at the designated sites in brackets.

(b) Estimated through a combination of traffic and booth counts.

(c) As of July 2002, estimates of person entries is derived using traffic counts only. As a result, pre and post-July 2002 data are not strictly comparable.

(d) Estimated through traffic counts.

(e) Number of people taken on a guided tour.

(f) The sum of ferry arrivals only. From July 2000, excludes estimated plane passengers. Services disrupted during December 2002.

Source: *Tasmanian Parks and Wildlife Service, Department of Primary Industries, Water and Environment.*



	<i>Overland(b)</i>	<i>South Coast(c)</i>	<i>Freycinet(d)</i>	<i>Port Davey(c)</i>	<i>Frenchmans Cap</i>
	<i>no.</i>	<i>no.</i>	<i>no.</i>	<i>no.</i>	<i>no.</i>
<b>2000-01</b>	7 273	915	3 002	208	753
<b>2001-02</b>	7 537	1 099	3 512	229	644
<b>2002-03</b>	8 154	p 957	3 143	p 173	826
<b>2002</b>					
October	222	11	128	—	6
November	670	76	466	16	75
December	1 398	182	372	31	106
<b>2003</b>					
January	1 702	259	810	67	195
February	1 388	185	331	22	156
March	1 182	p 110	276	13	91
April	1 173	p 91	279	16	115
May	135	p 12	34	p 4	33
June	59	p 4	73	p 1	14
July	69	p 2	60	p —	11
August	26	p —	25	p —	4
September	141	p —	68	p —	5
October	203	p 6	66	p —	24

(a) Numbers include only walkers who registered and represented their intention.

(b) Sum of registrations at Cradle Mt and Lake St Clair.

(c) Sum of registrations to walk the length of the track in any direction, irrespective of starting point.

(d) All overnight walkers registered in the park.

Source: *Tasmanian Parks and Wildlife Service, Department of Primary Industries, Water and Environment.*

	<i>Passenger vehicles</i>	<i>Other vehicles</i>	<i>Total</i>	<i>Change from corresponding month of previous year</i>
	<i>no.</i>	<i>no.</i>	<i>no.</i>	<i>%</i>
ORIGINAL				
<b>2000-01</b>	9 944	4 693	14 637	..
<b>2001-02</b>	9 467	5 295	14 762	..
<b>2002-03</b>	9 017	6 384	15 401	..
<b>2002</b>				
October	707	496	1 203	-4.3
November	869	529	1 398	-2.0
December	1 063	521	1 584	-15.4
<b>2003</b>				
January	591	434	1 025	3.6
February	619	450	1 069	-1.9
March	723	495	1 218	11.4
April	631	546	1 177	6.7
May	743	711	1 454	8.3
June	821	728	1 549	19.7
July	802	605	1 407	19.8
August	1 059	530	1 589	21.2
September	1 129	510	1 639	32.3
October	1 295	713	2 008	66.9
TREND				
<b>2000-01</b>	9 887	4 691	14 579	..
<b>2001-02</b>	9 504	5 266	14 771	..
<b>2002-03</b>	9 176	6 379	15 555	..
<b>2002</b>				
October	712	525	1 237	1.6
November	710	523	1 233	-1.7
December	717	519	1 236	-3.1
<b>2003</b>				
January	733	518	1 251	-2.3
February	756	523	1 279	0.3
March	784	536	1 320	4.5
April	811	550	1 361	8.3
May	841	563	1 404	11.5
June	881	577	1 458	15.3
July	936	592	1 528	20.6
August	1 003	608	1 611	27.8
September	1 072	626	1 698	36.1
October	1 141	642	1 783	44.1

(a) These statistics are based on the VFACTS series produced by the Federal Chamber of Automotive Industries. VFACTS reports the numbers of new motor vehicle sales by dealers and direct sales by manufacturers throughout Australia.

Source: Sales of New Motor Vehicles (cat. no. 9314.0.55.001).

								<i>Trend</i>	
	Original	Food retailing	Clothing and soft good retailing	Household good retailing	Recreational good retailing	Hospitality and services	Total(d)	Change from corresponding period of previous year	
								\$m	\$m
<b>2000-01</b>	3 222.4	1 401.0	158.9	479.8	180.9	377.9	3 230.2		6.0
<b>2001-02</b>	3 384.3	1 450.3	190.1	520.1	192.9	364.8	3 387.0		4.9
<b>2002-03</b>	3 582.2	1 469.7	199.7	580.2	187.1	400.4	3 595.7		6.2
<b>2002</b>									
October	297.9	121.6	16.5	46.9	15.6	33.1	295.1		6.7
November	313.1	121.8	16.5	46.8	15.4	33.0	296.2		6.3
December	387.9	121.9	16.5	47.0	15.3	32.8	297.3		5.9
<b>2003</b>									
January	299.5	122.0	16.6	47.2	15.2	32.6	298.2		5.3
February	270.6	122.2	16.7	47.8	15.0	32.7	299.2		4.8
March	296.8	122.6	16.7	48.8	15.0	33.2	301.2		4.7
April	298.6	123.5	16.7	50.0	15.2	34.1	304.5		5.0
May	307.4	124.8	16.7	51.5	15.9	35.4	309.2		6.1
June	287.7	126.5	16.7	53.0	16.8	36.7	314.6		7.7
July	309.9	128.3	16.8	54.4	17.8	37.7	320.0		9.3
August	307.0	130.1	16.8	55.6	18.7	38.4	324.9		10.7
September	309.8	131.8	16.8	56.5	19.5	39.0	329.1		11.9
October	337.0	133.2	16.9	57.4	20.1	39.3	332.6		12.7

(a) Excludes motor vehicles, parts, petrol, etc.

(b) ABS retail seasonally adjusted and trend estimates for earlier periods are revised each month. See *Retail Trade, Australia* (cat. no. 8501.0) for more details.

(c) Data from July 2000 reference month onwards are recorded inclusive of GST. See *Retail Trade, Australia* (cat. no. 8501.0) and page 2 of this publication for more details. A break in the trend series occurred between June and July 2000 because of the impact of The New Tax System on retail turnover.

(d) Includes Department stores and Other retailing.

Source: *Retail Trade, Australia* (cat. no. 8501.0).

	Tasmania				Australia			
	Imports	Imports change over preceding period	Exports	Exports change over preceding period	Imports	Imports change over preceding period	Exports(b)	Exports change over preceding period
	\$m	%	\$m	%	\$m	%	\$m	%
<b>2000-01</b>	524	19	2 435	10	118 317	7	119 539	23
<b>2001-02</b>	518	-1	2 388	-2	119 649	1	121 108	1
<b>2002-03</b>	763	47	2 454	3	133 130	11	r 115 454	-5
<b>2002</b>								
October	42	-5	183	-1	11 893	10	10 416	5
November	30	-28	257	40	11 646	-2	9 998	-4
December	42	37	210	-18	12 129	4	10 406	4
<b>2003</b>								
January	39	-7	198	-6	10 900	-10	8 927	-14
February	47	20	184	-7	10 226	-6	9 056	1
March	30	-35	221	21	10 786	5	9 868	9
April	52	71	205	-7	r 10 948	1	r 8 699	-12
May	32	-39	232	13	r 10 371	-5	r 8 970	3
June	35	9	163	-30	10 718	3	r 8 799	-2
July	52	49	r 181	11	r 10 604	-1	r 8 514	-3
August	47	-9	260	44	r 10 875	3	r 9 077	7
September	43	-7	168	-35	r 11 489	6	r 9 048	—
October	30	-31	184	9	11 839	3	9 109	1

(a) It is difficult to get a complete picture of Tasmania's trade performance as imports recorded by the ABS include only goods imported directly into the State from overseas, and reported by the Australian Customs Service. Many of Tasmania's goods imported for direct consumption, or input into further processing industries, arrive via interstate ports, and are not included in this table.

(b) Includes re-exports.

Source: ABS data available on request, *International Trade*.

	European Community			East Asia					Total all countries
	United States of America	United Kingdom	Total European Community	Japan	Korea	Taiwan	Hong Kong	ASEAN(a)	
	\$'000	\$'000	\$'000	\$'000	\$'000	\$'000	\$'000	\$'000	
<b>2000-01</b>	229 841	37 169	154 043	573 314	183 972	214 042	252 793	390 642	2 435 416
<b>2001-02</b>	295 301	35 702	129 225	547 903	223 208	153 819	263 275	347 321	2 387 806
<b>2002-03</b>	230 809	r 39 156	r 215 874	588 373	r 247 487	149 217	326 211	303 614	r 2 454 094
<b>2002</b>									
October	14 462	1 175	9 195	53 803	25 511	10 861	11 353	29 069	183 035
November	74 124	2 704	7 876	44 174	23 738	15 083	33 495	19 355	256 503
December	5 749	2 767	20 498	57 329	18 621	18 795	33 278	25 558	210 267
<b>2003</b>									
January	15 865	2 233	4 036	53 432	21 321	9 564	36 113	26 049	197 626
February	17 035	1 749	15 230	43 546	26 884	9 995	21 792	17 837	183 614
March	17 017	11 159	26 642	46 931	17 118	10 050	36 933	27 312	221 326
April	21 282	2 102	16 556	50 082	r 19 832	14 815	22 998	34 999	r 204 879
May	12 961	r 2 807	r 68 187	49 557	r 16 736	10 509	13 829	23 879	r 231 769
June	9 449	1 196	6 522	48 338	10 015	8 553	30 289	15 368	162 797
July	30 546	r 1 887	4 197	r 47 024	r 21 087	9 471	19 021	r 17 178	r 180 703
August	r 91 496	1 650	5 063	r 44 725	r 15 744	r 12 299	r 32 222	r 26 846	r 259 906
September	r 9 177	r 5 441	r 14 030	r 39 379	r 16 005	r 13 309	r 21 859	r 17 266	r 168 302
October	14 075	1 126	7 373	46 056	18 063	12 778	23 661	19 015	183 554

(a) ASEAN member countries are: Brunei, Cambodia, Indonesia, Laos, Malaysia, Myanmar, Philippines, Singapore, Thailand and Viet Nam.

Source: ABS data available on request, *International Trade*.

	<i>Meat and meat preparations</i>	<i>Dairy product &amp; eggs</i>	<i>Fish, crustaceans and molluscs</i>	<i>Vegetables and fruit</i>	<i>Wood and woodchips(a)</i>	<i>Textile fibres and wastes</i>	<i>Metallic ores and metal scrap</i>
	\$'000	\$'000	\$'000	\$'000	\$'000	\$'000	\$'000
<b>2000-01</b>	88 773	101 006	176 737	49 788	31 816	21 248	242 366
<b>2001-02</b>	75 541	114 682	174 885	60 759	43 788	23 797	188 273
<b>2002-03</b>	76 222	89 360	163 468	r 61 150	38 121	33 189	167 827
<b>2002</b>							
October	4 485	4 384	10 511	1 075	3 214	2 583	5 832
November	5 893	6 152	16 548	637	4 281	1 380	21 402
December	10 074	10 375	22 076	1 392	4 660	3 731	13 941
<b>2003</b>							
January	5 623	9 215	18 286	2 960	375	706	18 554
February	7 372	6 573	11 892	3 636	2 083	4 729	15 641
March	7 862	11 672	11 685	9 962	3 643	12 534	10 289
April	7 117	10 044	9 726	13 041	3 434	798	5 772
May	6 689	6 795	10 096	r 14 433	1 511	296	14 917
June	5 364	4 711	6 421	4 321	1 958	491	17 252
July	r 5 314	4 992	14 380	2 553	3 375	2 898	7 994
August	4 515	5 195	15 872	r 1 940	961	657	3 282
September	r 3 880	r 4 443	r 17 104	r 1 319	r 2 567	3 076	8 711
October	5 679	8 590	12 460	1 725	5 696	1 677	13 201
	<i>Paper and paperboard</i>	<i>Iron and steel</i>	<i>Non-ferrous metals</i>	<i>Road vehicles and transport equipment</i>	<i>Other and combined confidential items(b)</i>	<i>Total all commodity groups</i>	
	\$'000	\$'000	\$'000	\$'000	\$'000	\$'000	
<b>2000-01</b>	3 444	4 209	793 286	107 374	815 368	2 435 416	
<b>2001-02</b>	14 208	2 894	762 015	106 156	820 806	2 387 806	
<b>2002-03</b>	26 953	2 911	r 751 109	132 056	911 726	r 2 454 094	
<b>2002</b>							
October	1 141	170	62 728	2 743	84 169	183 035	
November	1 684	152	67 425	62 466	68 483	256 503	
December	1 746	827	63 852	196	77 397	210 267	
<b>2003</b>							
January	2 288	149	66 796	106	72 569	197 626	
February	2 823	237	51 561	260	76 808	183 614	
March	3 347	211	64 981	8 190	76 950	221 326	
April	3 760	244	r 64 288	609	86 046	r 204 879	
May	3 618	47	r 47 881	56 501	68 985	r 231 769	
June	2 840	236	49 140	822	69 241	162 797	
July	2 178	198	r 66 332	99	r 70 389	r 180 703	
August	r 2 015	150	r 77 432	77 747	r 70 143	r 259 906	
September	r 2 086	291	r 48 750	310	r 75 765	r 168 302	
October	2 153	3 137	57 668	563	71 004	183 554	

(a) Hardwood woodchips exports are confidential for Tasmania from June 2000.

(b) Includes medical & pharmaceutical products from January 2002.

Source: ABS data available on request, *International Trade*.

	NSW	Vic.	Qld	SA	WA	Tas.	Aust.(a)
<b>Population</b>							
Estimated resident population, June 2003 ('000) p	6 686.6	4 917.4	3 796.8	1 527.4	1 952.3	<b>477.1</b>	19 881.5
Proportion of Australian population, June 2003 (%) p	33.6	24.7	19.1	7.7	9.8	<b>2.4</b>	100.0
Population growth rate, 12 months to June 2003 (%) p	0.8	1.2	2.3	0.6	1.4	<b>0.9</b>	1.2
<b>Labour force</b>							
Employment growth, November 2002 to November 2003 (trend series) (%)							
Males	1.7	3.1	2.9	1.9	2.3	<b>3.0</b>	2.3
Females	1.5	-1.4	4.7	1.4	-0.9	<b>7.5</b>	1.1
Persons	1.6	1.1	3.7	1.7	0.9	<b>5.0</b>	1.8
Unemployment rate (trend series), November 2003 (%)	5.4	5.2	6.0	6.2	6.1	<b>6.7</b>	5.6
Unemployment growth, November 2002 to November 2003 (trend series) (%)	-5.9	-7.6	-11.1	3.7	0.9	<b>-19.8</b>	-6.5
Participation rate (trend series), November 2003 (%)	62.9	63.2	64.9	61.3	66.0	<b>59.0</b>	63.6
Job vacancy rate, August 2003 (%)	1.3	1.4	1.5	1.1	1.1	<b>*1.1</b>	1.3
Working days lost through industrial disputes, 12 months to August 2003 (days per '000 employees)	23	53	30	15	51	<b>8</b>	34
<b>Wages and prices</b>							
Average weekly full-time adult employees' total earnings (trend series) August 2003 (\$)							
Males	1 096.70	1 043.10	972.10	954.40	1 068.00	<b>912.00</b>	1 044.30
Females	887.00	854.80	790.20	822.80	784.30	<b>776.30</b>	847.60
Persons	1 019.40	977.40	906.90	909.70	971.20	<b>868.20</b>	974.30
Average weekly full-time adult employees' total earnings, growth (trend), 12 months to Aug 2003 (%)	6.1	5.8	6.3	7.0	5.9	<b>3.3</b>	6.2
Consumer price index, all groups, annual growth to September qtr 2003 (%) (b)	2.0	2.9	2.9	3.6	2.1	<b>2.6</b>	2.6
<b>Building</b>							
% change in the number of total dwelling units approved (original),							
— in the 12 months ended October 2003, over the same period previous year	-7.9	-6.3	2.6	-3.5	8.9	<b>14.6</b>	-2.4
— October 2002 to October 2003	-32.6	10.3	-24.2	10.8	36.7	<b>38.4</b>	-9.0

For footnotes see end of table.

...continued

	NSW	Vic.	Qld	SA	WA	Tas.	Aust.(a)
<b>Private investment and retail trade</b>							
% change in private new capital expenditure, 12 months ended September 2003 over the same period previous year (original)	7.1	8.9	17.7	25.0	31.0	<b>-11.3</b>	14.2
% change in trend estimates turnover of retail establishments, October 2003 (change from corresponding month of the previous year)	6.1	7.4	12.4	2.9	7.2	<b>12.7</b>	7.6
<b>Transport</b>							
% change in number of sales of new motor vehicles in the 12 months ended October 2003 over the same period previous year, (trend)(c)	5.6	8.4	14.0	16.4	11.3	<b>13.3</b>	9.2
<b>Agriculture</b>							
% change in the number of livestock slaughtered 12 months ended October 2003 over the same period previous year (original)							
Cattle and calves	-9.7	-20.5	3.6	-18.5	-5.1	<b>10.5</b>	-7.3
Sheep and lambs	-32.7	-17.1	8.6	-16.8	3.1	<b>19.4</b>	-17.8
<b>Tourism — room occupancy rates</b>							
Hotels, motels & guest houses, & serviced apartments with facilities — March quarter 2003 (%)	60.6	60.7	58.6	55.3	56.6	<b>70.3</b>	59.1
<b>Australian National and State Accounts</b>							
% change in Domestic (State) Final Demand(d), Chain Volume measures (trend series)							
Jun qtr 2003 to Sep qtr 2003	0.6	0.5	1.4	1.4	1.8	<b>1.0</b>	0.9
Sep qtr 2002 to Sep qtr 2003	4.1	2.8	5.6	6.1	8.2	<b>4.5</b>	4.5

(a) Australian totals include the ACT and NT, with the exception of Agriculture, which excludes both.

(b) CPI applies to state capitals.

(c) This data is new and replaces the Registration of New Motor Vehicles data. The Australian Bureau of Statistics is no longer collecting and disseminating statistics relating to the registration of new motor vehicles. For more information please refer to the paper *Developments in New Motor Vehicle Statistics, 2001* (cat. no. 9313.0)

(d) Total of four types of expenditure: Private investment, Private consumption, Government investment, Government consumption.



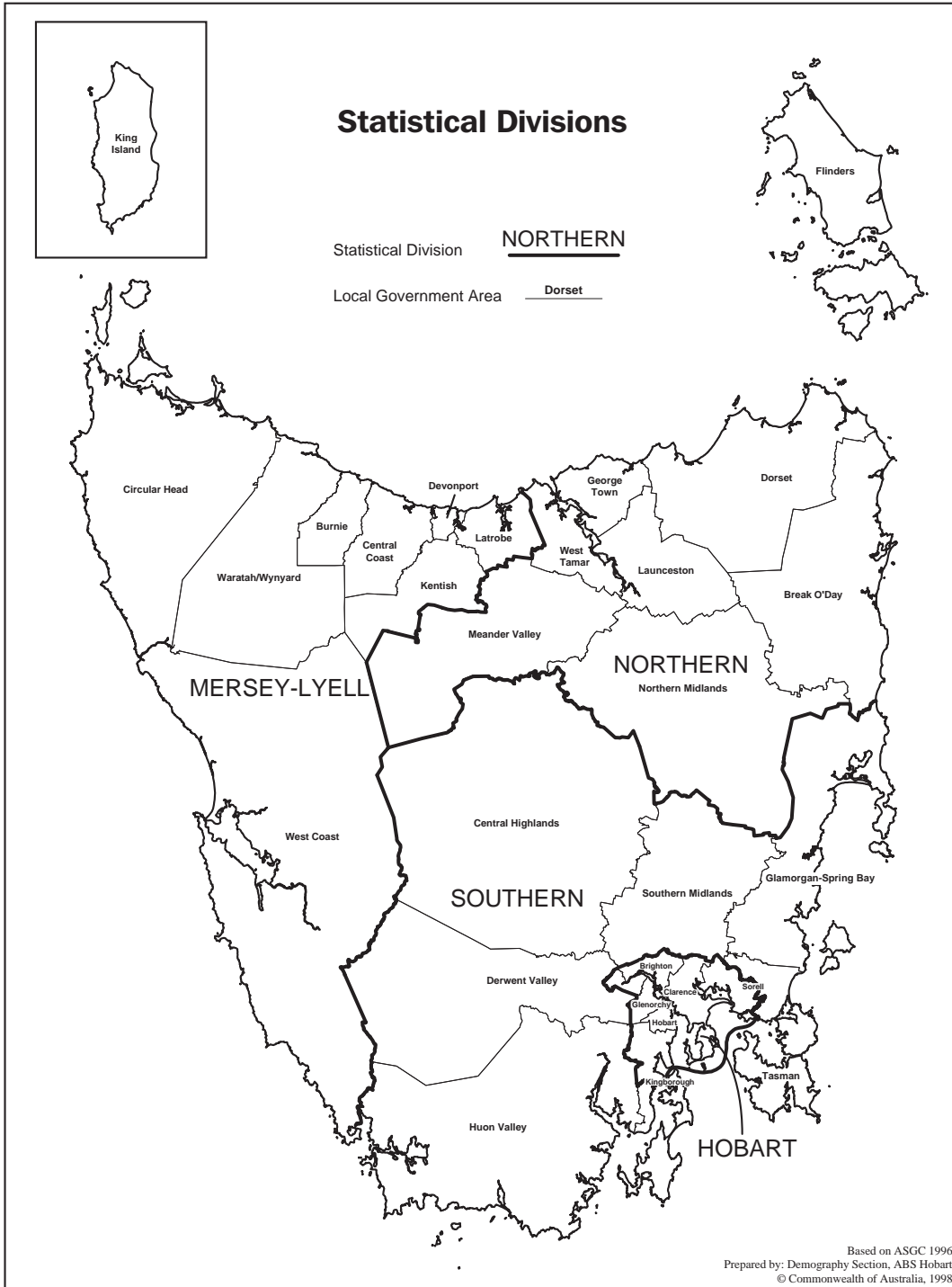
		Greater Hobart and Southern Statistical Divisions	Northern Statistical Division	Mersey-Lyell Statistical Division	Tasmania
<b>Area(a)</b>	km <sup>2</sup>	25 616	19 980	22 523	68 121
<b>Population</b>					
Estimated resident population, 30 June 2001	no.	231 854	133 115	106 826	471 795
Estimated resident population, 30 June 2002	no.	232 713	133 595	106 417	472 725
Births 2001(b)	no.	3 199	1 815	1 397	6 430
Deaths 2001(b)	no.	1 827	1 148	884	3 876
<b>Labour force (original), October 2003</b>					
Total employed	no.	101 100	62 700	45 600	209 400
Total unemployed	no.	6 300	5 600	3 200	15 100
Unemployment rate	%	5.9	8.2	6.6	6.7
Participation rate	%	58.9	62.0	55.6	59.0
<b>Schools, 2002(c)</b>					
Government	no.	98	58	58	214
Non-government	no.	33	17	16	66
<b>Full-time students, 2002(c)</b>					
Government	no.	28 454	18 091	14 963	61 508
Non-government	no.	11 981	4 946	3 915	20 842
All schools	no.	40 435	23 037	18 878	82 350
<b>Educational qualification, 2001 Census(d)</b>					
Postgraduate degree level	no.	3 016	940	386	4 342
Graduate diploma and Graduate certificate level	no.	2 374	850	525	3 749
Batchelor degree level	no.	16 171	7 052	3 821	27 044
Advanced diploma and diploma level	no.	9 613	4 785	3 429	17 827
Certificate level	no.	25 715	15 463	12 953	54 131
<b>Agriculture</b>					
Establishments with agricultural activity, 2001-02 season	no.	1 060	1 471	1 495	4 027
Total area of establishments	ha.	704 091	774 431	296 618	1 775 140
Crops, production, 2001-02 season					
Potatoes	tonnes	7 715	128 560	213 076	350 134
Onions	tonnes	—	18 022	44 942	62 975
Apples	tonnes	36 741	6 234	8 642	51 617
Barley	tonnes	8 765	16 065	1 608	26 438
Livestock, 2001-02 season					
Meat cattle	no.	60 255	169 631	201 886	431 771
Milk cattle	no.	4 389	79 489	103 182	187 060
Sheep and lambs	no.	1 452 094	1 753 403	174 135	3 379 632
Pigs	no.	1 331	13 277	3 177	17 785
Gross value of agricultural production, 2001-02	\$m	nya	nya	nya	903
<b>Building, 2002-03</b>					
Total dwelling units approved	no.	1 214	588	336	2 138
Value of total residential building approved	\$'000	187 625	84 036	51 493	323 154
Value of total building approved	\$'000	281 778	137 297	97 597	516 671
<b>Dwellings, Census 2001</b>					
Total dwellings	no.	102 374	59 307	46 364	208 046
Occupied private dwellings	no.	89 156	51 249	40 766	181 172
Fully owned	no.	35 777	21 570	17 984	75 331

(a) Source: Department of Primary Industries, Water and Environment.

(b) Births and deaths are based on usual residence year of registration. Total Tasmania includes usual residence other than Tasmanian Statistical Divisions.

(c) Source: Tasmanian Department of Education and the Department of Education, Science and Training.

(d) From 2001 the *Australian Standard Classification of Education (ASCED)* (cat. no. 1272.0) replaced the *ABS Classification of Qualifications (ABSCQ)* (cat. no. 1262.0). For further information see ASCED.





## FOR MORE INFORMATION...

- INTERNET* **www.abs.gov.au** the ABS web site is the best place to start for access to summary data from our latest publications, information about the ABS, advice about upcoming releases, our catalogue, and Australia Now—a statistical profile.
- LIBRARY* A range of ABS publications is available from public and tertiary libraries Australia-wide. Contact your nearest library to determine whether it has the ABS statistics you require, or visit our web site for a list of libraries.
- CPI INFOLINE* For current and historical Consumer Price Index data, call 1902 981 074 (call cost 77c per minute).
- DIAL-A-STATISTIC* For the latest figures for National Accounts, Balance of Payments, Labour Force, Average Weekly Earnings, Estimated Resident Population and the Consumer Price Index call 1900 986 400 (call cost 77c per minute).

## INFORMATION SERVICE

Data which have been published and can be provided within five minutes are free of charge. Our information consultants can also help you to access the full range of ABS information—ABS user-pays services can be tailored to your needs, time frame and budget. Publications may be purchased. Specialists are on hand to help you with analytical or methodological advice.

- PHONE* **1300 135 070**
- EMAIL* **client.services@abs.gov.au**
- FAX* 1300 135 211
- POST* Client Services, ABS, GPO Box 796, Sydney 2001

## WHY NOT SUBSCRIBE?

ABS subscription services provide regular, convenient and prompt deliveries of ABS publications and products as they are released. Email delivery of monthly and quarterly publications is available.

- PHONE* 1300 366 323
- EMAIL* subscriptions@abs.gov.au
- FAX* 03 9615 7848
- POST* Subscription Services, ABS, GPO Box 2796Y, Melbourne 3001



2130360001046  
ISSN 1034-1803

RRP \$23.00